

Economic Status of  
Women Construction Workers  
in a Selected Area

BY

Renika Devi C.

A THESIS SUBMITTED TO AVINASHILINGAM INSTITUTE FOR  
HOMESCIENCE AND HIGHER EDUCATION FOR WOMEN  
(DEEMED UNIVERSITY) COIMBATORE-641 043.  
(ERSTWHILE AVINASHILINGAM HOMESCIENCE COLLEGE  
AFFILIATED TO BHARATHIAR UNIVERSITY)  
IN PARTIAL FULFILMENT OF THE REQUIREMENTS FOR THE  
DEGREE OF MASTER OF ARTS

**MAY 1989**

## Acknowledgement

## ACKNOWLEDGEMENT

The Investigator expresses her thanks to Chancellor T.S. Avinashilingam and Vice Chancellor Dr.(Tmt) Rajammal P. Devadas M.A., M.Sc., Ph.D (Ohio State) D.Sc., (Madras) of Sri Avinashilingam Institute for Home Science and Higher Education for Women, Coimbatore for all the facilities given to her in the course of the preparation of the dissertation.

She sincerely thank Tmt.A. Rajeswari, M.A., M.Phil., Dip.Ed., Lecturer (Selection Grade) Sri Avinashilingam Institute for Home Science and Higher Education for Women, Coimbatore for her valuable guidance and constant encouragement in helping to carry out this thesis work.

She wishes to thank Dr.(Selvi)S. Saraswathi Bhatji M.A., Ph.D., Dean of Humanities, Sri Avinashilingam Institute for Home Science and Higher Education for Women Coimbatore for providing facilities to conduct the study.

She records her thanks to Selvi K.Nirmala, B.Sc., M.A., B.Lit.Sc., Librarian, Sri Avinashilingam Institute for Home Science and Higher Education for Women, Coimbatore.

She expresses her thanks to Mr.Sridhar who patiently typed out her manuscripts.

## LIST OF CONTENTS

CHAPTER	PAGE No.
LIST OF TABLES	
LIST OF FIGURES	
LIST OF APPENDICES	
I. INTRODUCTION	1
II REVIEW OF LITERATURE	7
1) Position of women in the past	8
2) Position of women in the present	9
3) Trends in women working force	10
4) Major occupation of women	11
5) Women in unorganised sector	13
6) Women in construction	17
7) Studies on women.	19
III METHODOLOGY	24
a) Selection of area	24
b) Selection of Sample	24
c) Collection of data	25
d) Presentation of data and tools used	25
IV RESULTS AND DISCUSSION	26
i General background	28
ii Employment	32
iii Availability of work	39
iv Number of working days	40
v Wage differential on sex basis	40
vi Average earning of female and male workers	41

## LIST OF CONTENTS

CHAPTER	PAGE No
vii Management of Income	42
viii Distribution of Income in the family pool	43
ix Spending of personal Income	43
x Property owned by construction workers	44
xi Account in the bank	45
xii Help received from others in household work	46
xiii Involvement in household activities	46
xiv Part-time work of women construction workers	49
xv Opinion about women employment	49
xvi Views on Status of women	50
 V. SUMMARY AND CONCLUSION	 52
 BIBLIOGRAPHY	 59
 APPENDICES	 66

LIST OF TABLE

<u>TABLE</u>		<u>PAGE</u>
I.	DISTRIBUTION OF RESPONDENTS BY SIZE OF FAMILY	28
II.	SEX COMPOSITION OF THE FAMILY MEMBERS	29
III.	AGE COMPOSITION OF FAMILY MEMBERS	29
IV.	MOTHER TONGUE OF THE SAMPLE FAMILIES	30
V.	RELIGION OF THE RESPONDENTS	31
VI.	AGE OF MARRIAGE OF THE RESPONDENTS	31
VII.	EDUCATIONAL QUALIFICATION OF CONSTRUCTION WORKERS	32
VIII.	TYPE OF EMPLOYMENT	33
IX.	TYPE OF WORK	35
X.	CAREER IN CONSTRUCTION	35
XI.	DISTANCE TO WORK PLACE	36
XII.	MODE OF PAYMENT	37
XIII.	AMOUNT OF INCOME RECEIVED	38
XIV.	HOURS OF WORK	38
XV.	AVAILABILITY OF EMPLOYMENT	39
XVI.	NUMBER OF WORKING DAYS	40
XVII.	WAGE DIFFERENTIAL ON SEX BASIS	41
XVIII.	AVERAGE EARNING PER MONTH (MALE AND FEMALE)	42
XIX.	MANAGEMENT OF INCOME	43
XX.	CONTRIBUTION OF INCOME TO FAMILY POOL	44

	<u>PAGE</u>
XXI. SPENDING ON PERSONAL INCOME	44
XXII. PROPERTY OWNED BY CONSTRUCTION WORKERS	45
XXIII. BANK ACCOUNT OF WOMEN CONSTRUCTION WORKERS	46
XXIV. HELP FROM OTHERS IN HOUSEHOLD WORK	48
XXV. INVOLVEMENT IN HOUSEHOLD ACTIVITY	49
XXVI. PART TIME ACTIVITY OF WOMEN CONSTRUCTION WORKERS	50
XXVII. VIEWS ON EMPLOYMENT	51
XXVIII. STATUS OF WOMEN	51

LIST OF FIGURE

FIGURE

PAGE

(1) WORK SITUATION - PHOTOGRAPHS

34

LIST OF APPENDICES

APPENDIX

PAGE

1. Interview Schedule on ECONOMIC STATUS OF WOMEN  
CONSTRUCTION WORKERS IN A SELECTED AREA 66

## Introduction

## ECONOMIC STATUS OF WOMEN CONSTRUCTION WORKERS

### IN A SELECTED AREA

#### INTRODUCTION

The significant contribution which women are making to the economic life of our country is a direct reflection of the rising number of women workers, their expanding job opportunities and their effective job performance. Working women have actively participated in the production of goods and services and helped to raise and maintain living standards. For women of ability who are willing to secure suitable training and experience, there is a variety of opportunities for advancement in the business, industries and professional world.

Whether (or) not women works outside the home depends on numerous economic and social factors. In addition to Economic consideration a women's decision about paid employment is influenced by such personal factors as her age, maritable status and family responsibility. These affect not only her decision on seeking employment but also on how long to remain at work, on whether to reenter the labour force, when family responsibility decrease and on when to retire.

The majority of women continue to be home maker whether or not they also have jobs. Among women there are professional, technological, medical and health workers, teachers, managers, officials, steno-graphers, typists, Secretaries, Sales workers, service workers, cooks and barmaids, private household workers, farm labourers, industrial workers and ordinary labourers,

The important effect that marriage, children, widowhood and divorce in determining women participation in labour force indicates the fact, <sup>that</sup> womens work is much more complicated than that of of men. For women who remain single, the work pattern is relatively simple and bears a strong resembleness to that of man. Women who married have a work life expectantly of 31 years, 9 years less than single women-whereas most single women must depend on their own earnings for support, these women with husband are in a better position to stop work when they have minor disability. Women generally retire at an earlier age than men.

In India, recently the number of women who are seeking employment has increased, women who are poor, illiterate seek, such type of employment which needs more physical work than mental work. Women who work in the construction of buildings belong to this category. The investigator desires to make a study on the economic status of women, who are engaged as construction workers. The investigator has selected Kuniamuthur as a village from where women workers who are living there and who are engaged as manual workers in the construction of buildings were selected.

Growing interest in women studies is one the striking features in the last few years. Women have been regarded as the nucleus of a nation. A nation is made up of millions of families depending on women as wives and mothers for their progress and well being. The health and growth of a nation depends upon the vitality of its women.

According to Ashok Mitra the women constitute half of the world's population, perform nearly two third of work hours, received one tenth of the world's income and one hundredth of the world's property.

A very significant role of women as a worker is that one can never separate her work from her responsibilities in the family. The employer, the Government, the trade Unions, as well as the value system, look upon women as a secondary worker, whose primary role is in the family. Employment outside for women is not to be viewed merely from nature, conditions and remunerative of work but her condition at home. The family setting may force women not only to accept wage work, but may compel her to accept adverse terms of employment.

In India the total work force of 1981 was 2,44,604,986. In this male work force constitute 1,81,080,212 and female constitute 63,524,774. Likewise in Tamil Nadu total work-force in 1981 was 20,198,790. In this male work force constitute 13,855,737 and female work force constitute 6,343,053. Although women now work in diverse fields and occupy position of importance statistics indicate that 3 decades of development has not been very kind to women workers in general.

The status of unorganised female worker in developing societies is of peculiar character in nature as they constitute majority of the work force and also most neglected in the male

dominated societies. Women construction workers is a significant group of women in unorganised sector of India.

In the unorganised sector a significant percentage of women are engaged in construction industry. Although this Industry offers difficult jobs women are employed to undertake certain specific work. Since it depends upon the number of factors such as volume and intensity of construction work, migration trends contractor's choice, wage rates and manipulations of employers. Despite unpredictability hundreds and thousands of women work in the construction of buildings, projects, dams, roads and other monuments of progress.

The nature of work given is unskilled, women being considered physically weak are exploited by the employers. Male labour and child labour are preferred than female labour. As a result women become alienated from work, and despite migration and increase in population there is a fall in the percentage of of women labour in the construction Industry.

Women construction workers have not witnessed any change in their life style over the years. Their condition have become worse. The low caste class dimension of the women workers explicitly indicates their general low level of living.

Despite working hard women construction workers received no special treatment. They are discriminated in the payment of wages.

Their ignorance, lack of skills and assertive nature make them subservient both at the work place and in family life. Despite working outside home they continue to be secondary importance in the family affairs.

They are alienated, from their families, from their native places, from their jobs from land and from human dignity. Disintegrated and scattered, they have bonded their lives only to taste disrespect, slavery and early death.

According to the 1971 censuses there were 204,000 women construction workers in India, women comprised 10 percent of the rural and 9 percent of the urban workers in construction. There is great regional variation in the proportion of construction workers, Harijans make up the majority of construction workers in India.

There are wage legal, illegal and nonlegal though which employers circumvent labour laws. Employers do not realise the potential of labour laws which otherwise would help the workers. In this pattern women employees are the most affected for reasons of ignorance and lack of organised strength. The denial of equality in work and wages and the deprivation of basic amenities and minimum standards are particularly applicable in the case of women workers.

The present study though cannot be commenced as a pioneer one in the field makes a humble beginning to study the economic status of the women construction workers at Kuniamuthur.

The objective of the study are

Analysis of the Economic status of women construction workers by taking into account their

- (1) Family back ground
- (2) Educational status
- (3) Marital Status
- (4) Family responsibility
- (5) Work conditions
- (6) Mode of payment
- (7) Income from management
- (8) Contribution they make to the family income and household work.
- (9) Their view on the employment of women and status.

Through this study, the investigator feels that she could explain the actual economic position of construction workers and their attitude towards employment on women and their status.

-----

# Review of Literature

## REVIEW OF LITERATURE

The Review of Literature is given under the following headings.

1. Position of women in the past.
2. Position of women in the Present.
3. Trends in Women working force.
4. Major Occupation of women.
5. Women in unorganised sector.
6. Women in Construction
7. Studies on Women

## I. POSITION OF WOMEN IN THE PAST

The position and status of women in any society is an index of the Social Economic and Cultural achievement of the society. The traditional India was based on the names of patriarchy, a society ruled by an ideology of female subordinate, a society that is composed mainly of cells of patriarchal-partilocal families with the economic controls in the male hands. The cultural cum maternal patriarchy was interwoven with the worlds most important social structure of caste, marriage. Female demeanour or the nature of women's work was closely linked with the family's position in the social status of hierarchy. The family's caste ranking and a community's ethnic ranking constrain women for more than by the status-hierarchy of work, confining them to certain areas or kinds of work and exchanging them from certain other (Vina Mazunder 1977)

History teaches that the class or social group which plays the Principal role in social production and performs the main faunction in production must in the course of time take control of the production. In the case of women, most of the primitive societies were generally considered to be matriarchcal society in which women played the principal role in production women performed both household and food production. The origin of family, men taking part by playing the role of a savage warrior and hunter relegated the women into secondary position confining her to domestic labour.

Exploitation became the prime concern of feudalism and women were the worst sufferers in all respects. The change in the mode of production and emergence of the capitalist System further ruined the Status of dependent class woman. Woman became secondary citizens in the family life.

The low status of Indian women was the result of contradictions existing the society. The exploitation of women and male domination is continued in different forms contents and styles of socio economic and political life of our society. The social condition continued to be antiwomen and exploitative in character. The economic controls characterised by class structure and class relations further alienated the women from the society. All these conditions individually and cumulatively affected the Status of Indian women in the Past (K.G. RAMA 1974)

2. POSITION OF WOMEN IN THE PRESENT

Today women are playing a role no less than menfolk and at times dual roles as wife and as an employee. It is no more fully believed that women must remain trapped in their traditional role of cook, Housewife or remain as a decorative adjuncts in a male oriented society. Though the middle class women joined the large mass of workers by taking up various odd jobs in the latter periods, it was the labour class women who were the first to enter into service to earn their livelihood (K.V. RAMA 1974)

The significant contribution women are making to the economic life of our country is a direct reflection of the rising number of women worker, their expanding job opportunities and their effective job performance. Women's present working partnership with men in the economic world has developed largely as a result of the many social and economic changes of the last half century.

Scientific and technological improvement not only simplified many home duties but also reduced the time required for the physical tasks of Home Making. This leads to more job specialisation and new employment opportunities in offices and factories, large business organizations expanded activities of commerce and communication. This changed the traditional attitudes concerning with women's status in the labour force. (Alick K. Leopold 1958)

### 3. TRENDS IN WOMEN WORKING FORCE

Opportunities for their education and Training, the nation wide development of free education for both boys and girls and the gradual achievement of equal opportunities for higher learning have encouraged women to prepare for and seek employment in ever expanding occupational fields.

The proportion of women in the labour force which includes both the employed and the unemployed has increased gradually during the past decades. The size of the proportional change explains to a small degree the marked increase in women's representation in the labour force.

11

The majority of women continue to be Home Makers whether or not they also have jobs. Over half of all women devote full time for home making. During 1958 about 35 percent of women were in the labour force and about 55 percent were keeping house full time. The remainder were primarily girls under 20 years of age and in school.

Estimate of population growth in the near future place the total at 193 millions persons by 1965. The Economy reasonably expected to have 10 millions more workers. More than half of the additional workers predicted will be women. The demand for women worker will be grantest for those with the needed training and experience.

#### 4. MAJOR OCCUPATION OF WOMEN

The occupational activities of those in the labour force are generally divided into 11 broad catogories. Among women almost three fifths were clerical workers, operatives, service workers. Professional workers were the fourth largest group with private household, sales and managerial workers. A small miscellaneous group was made up of farm workers, craftsman and labourers.

Due to expanded activities of business corporations, large scale financial organisations, mail order and other retail establishments, Government operatings, there was notable increase in the number of women clerical workers. Professional and

service occupations also employed more women. The number of women in professional occupation increased by more than 1 million and those in service occupations by 1 $\frac{1}{2}$  million. There was fluctuations in the trend of women workers who worked in factories with recent technical innovations and the increased use of automatic machinery in mass production demand for production workers has been increasing.

Occupation with the largest numbers of women workers differ from those of men. Women predominated in clinical work. Importance of women into the labour force is indicated by their proportion of workers in various occupational groups. Women constitute more than two thirds of the clerical force in the country but relatively fewer of the workers in the professional and sale workers, operators and managers, officials and proprietress. The proportion of women is the largest among private household workers and among craftsmen, labourers and farmers.

Recently there were significant increase of women among Service workers, Sales workers and farm labourers. Only in the Professional group there was a decline the proportion of women. The number of professional men has increased even faster than the number of women.

In the future women's employment status can be expected to depend on women themselves. For women of ability who are willing to secure suitable training and experience there is a

variety of opportunities for advancement in the business, industrial and professional world. (Rohini Nayar)

#### 5. WOMEN IN UNORGANISED SECTOR

Women in traditional societies have been in some ways better off than after development began. Traditionally it was not considered appropriate for women to work outside the home for wages. The rate of women in the work force is especially low reflecting their value structure. In the traditional village women made distinctive contribution to cultivation, crafts, manual Services and the marketing of agricultural production and handicrafts. Technological changes had affected the work of women adversely in the handicrafts industries. Modernisation has opened new avenues to employment for women. This is true of Service Industries, the tertiary sector and the professions.

The largest sector of employed women is the unorganised sector which employs 94 percent of women workers. This sector includes land agricultural labourers, workers-in traditional village and cottage industries, domestic service, day labourers and street vendors. In 1971, 80 percent of women workers were in agriculture, 10.5 percent in Industry and 9.4 percent in services. They accounted for 17.35 percent of the total working force and 11.86 percent of the female population. Most of these female labour force was in the rural area (92.1 percent) according to the census is illiterate women were more vulnerable to exploitation and also earn lower wages than men.

Women in the organised sector are less subject to discriminatory practices. Women in this sector are also likely to be literate and aware of their rights. Statistical evidence shows that there was decline in female work force participation over the past. This decline is related to a number of other trends which adversely affected women, decline in the female proportion of the population of declining representation in decision making bodies, increasing gap in male and female literacy rate, and unequal access to health and medical services.

The decline in general Economic position of women was due to the operation of a number of demographic and development forces. There is discrimination against women in the work situation for example in matters such as recruitment, salary and promotion. A glance at the salary structure in most occupations reveals sexual asymmetry.

In the unorganised sector women are paid typically less than men. Another indicator of the status of women at the lower end of the Economic Scale is that there is more possibility for upward mobility out of occupation, such as sweeping for men than for women. Males also have greatest access to education at all levels and therefore to jobs than have women. This major difference to access to schools is apparent as early as the primary level. Men are also more likely than women to be assigned skilled (or) semi-skilled tasks, which pay more. An example of this is the construction industry, nearly all

women carry load, while men may work as masons, brick layers, supervisors etc.

For illiterate women such as sweepers and construction workers, migration to the city was generally the biggest decision in their lives. They left their villages because they were extra mouths their families could not feed. These women were exploited by contractors. These women workers who are doing heavy manual labour are subject besides the uncertainties of work, at times to sexual harassment on the job. Contractors and supervisors are always male and have absolute power over the jobs of these women. Family net works are more important as support systems for women. Most upper class women in India have servants (or) relatives at home, which means that absence at work, poses little (or) no problem in terms of child care. Among the lower classes in the urban setting however, family life is more tenuous, even in the nuclear family. In times of crisis (or) personal problems relatives are likely to offer support and practical assistance among upper-class families. For female wage labour, on the other hand illness (or) other emergencies, create a disaster for which there is no family solution (or) help.

The Contrast between the working condition of this great majority and those women in the small visible organised sector, on the other hand is striking. These women work in the professions, in administration, in mines and in factories. They are more likely to be protected by labour legislation, and of course to be aware of such legislation as well as to have access to

remedial action. They are those in the professions and administrations at least highly educated (or) trained and aware of their options. They are more highly paid and have better access to a whole range of child care and health services. Since most of them live in urban areas besides, they are more likely to live in extended families and to have the support which they provide, as well as to have servants. They have the freedom which education, training and economic means provide to consider other options. This kind of functional freedom to pursue an occupation which provides personal satisfaction more than Economic Support was apparent especially among women interviewed in the arts, most of whom were supported by husbands. Women in the arts nonetheless face the barriers of traditional attitudes.

Statistical and demographic evidence point conclusively to the decline of women in the work force and in the population as a whole in the last few decades. This evidence appears to suggest that unless educated women develop some awareness of their own disabilities and some sense of solidarity with lower caste women, the deterioration may not be arrested.

Tradition has bequeathed to Indian women an ambivalent legacy. Secondary status is Brahminism and patriarchy plus the reverence accorded to motherhood. Development has similarly left a dual imprint, low-paid heavy manual labour in construction and factories plus newer options in the elite professions of law;

journalism and politics. Another dual persists as mother Indian women does more than service, while as wife, she is ever the subordinate. Excluded from the male dominated, institutionalized and legitimized great traditions, women have adapted and exercised less formal power through the little Traditions and in the family.

#### 6. WOMEN IN CONSTRUCTION

In the unorganized sector a significant percentage of women are engaged in construction Industry. Although this industry offers difficult jobs, women are employed to undertake certain specific work. Since it depends upon a number of factors such as volume and intensity of construction work, migration, trends, constructors, choice, wage rates and manipulations of employer. Despite its unpredictability hundreds of women have contributed in the construction of building projects dams, roads and other monuments of progress.

Construction women can be classified into the contract labour and casual labour. The roads and building constructions works are invariably casual works. Contract labours are attached to the contractor and work wherever they are posted. Casual workers are employed on temporary basis and relieved after the completion of the work.

The nature of work is unskilled and consists of lifting load, cutting soil, carrying water, bricks, mostly cement, stones, sandcrushing, bricks mixing cement, concrete and other manual jobs.

Despite working hard and undertaking difficult jobs, women construction workers received no special treatment. They are discriminated in the payment of wage. They have no work, during illness in an advanced stage of pregnancy. Their ignorance lack of skill and assertive nature make them subservient both at the work place and in family life. At many of the work sites no proper facilities were provided for the better living of the workers.

7. STUDIES ON WOMEN

A study was made on women construction worker with special reference to different factors of women construction workers, G.P. SINHA & N. RANADE.

A study on socio Economic status of Indian women was done by K. Murali Monohar, V. Shoba & Janarahan Rao, in the year 1980. They concentrated on construction women workers, and their working conditions.

Chitra Ghosh analysed about the construction workers who are engaged in construction work in and around in old Delhi.

National council of applied Economic research New Delhi analysed employment in road transport and road construction.

Sarala, A Bengali, analysed about the construction workers in India ~~about women construction workers~~, and their living standard;

Smt. Shubhangi, G.Gote analysed about status of organised female workforce in developing socities, about their peculiar character in nature because they constitute majority of workforce in the year 1971.

D.R. Arora and R.R. Chole analysed about construction worker of Delhi. Their study was conducted by the authors to ascertain the living and working conditions of the labourers and to find out the reasons for their participations or non-participation in Trade Union activity as seen from the constructors angle.

B.K. Dhusia and S.Z. Hassan studied on role of women in Agricultural activity in the year 1988.

K.G. Rama analysed about women's welfare in Tamil Nadu with special reference to social welfare policy of the country in the year 1974.

A study was made on sanitary workers with special reference to sanitation by Murali Manohar K in the year 1980.

Banerjee N in his women workers and development deals with some aspects of role of women workers in India's development.

In another study Banerjee N analyses the conditions under which women seek employment and observe that women have been conditioned to accept low wage. They are primarily wives and mothers, not workers. Thus mental attitude only makes them more vulnarable to exploitation by employers.

A study on women workers in the unorganised sector in Kerala was presented by Eapen M. He focusses the pattern of women employment in the unorganised sector by different industrial categories, in order to indentify those activities in which women are pre-dominant and discussess some issues concerning the organisation of women workers in the unorganised sector.

Gangrade K.P. Gathia J analysed the problem of working women in the unorganised sector. The problems are discrimination and differentials in wages. This is due to lack of marketing links, lack of capital and non availability of raw material. Role of small scale Industry in feeding large scale Industry and women's part was analysed by Desai S.E. He gives statistics of women employed in Small Scale Industry and compares their situation with foreign countries.

Status of women in public sector industries and impact of national policy training facilities and special programme was studied by Rao V.R.

Kalpakam V studied the labour market segmentation in a multistruature context and its implication on the female labour force.

Special problems of women in industry was dealt by Sahay T. He deals with the special problems of women in particularly the one relating to health.

Women in regulated and miscellaneous Industries was studied by Sengupta P. He deals with the working conditions and wages of women in unregulated industry.

Working conditions and job satisfaction among industrial women workers was studied by Sharan R. His studies shows that women do not have job satisfaction.

Abraham A. in his Beedi workers of Bombay analysed the struggle of Beedi workers regarding the supply of tender leaves and minimum wages.

Baxi U. presented a paper at the Asian Regional Conference on women and house hold which describes the struggles and the problems of women Beedi workers when they participated in the activities of the Andra Pradesh Beedi workers Union. His another study related to conditions of workers in Sinnar Taluk of Nasik District in Maharashtra.

Jaya Singh's J. Report of women Beedi workers of Vellore has clearly examined the social-Economic conditions, the difficulties and the problems of beedi workers in Vellore.

Murali Manohar K. and host of others have presented papers at the conference on women's status and development. Their study was undertaken in the Nizamabad and warangel district of Andhra Pradesh. They have beautifully high-lighted the Socil-Economic background, work situation and the right pattern of Beedi rollers

in ... about the two Districts of Andhra Pradesh.

Women Beedi workers in a Kerala village was studied by Pillai and Lakshmi Devi K.P. They compared the situation of women Beedi workers working in the factory system with those working at home in relation to employment, work output of production, wages, working and health, conditions, benefits etc.

Socio-Economic survey of chipa women was analysed by Bhate R. He has conducted a survey of chipa women in Ahamadabad. His study clearly analyses the Socio-Economic problems of the chipa women of Ahamadabad. He has suggested some measures to make these women's Economically stronger.

Krishnaswamy L. in his workers on women entrepreneurs studied self-employed women association, Ahamadabad. He highlighted the efforts made by (SEWA)

## Methodology

### III. METHODOLOGY

The Methodology for the study on Economic Status of Women Construction workers in a selected Area consists of the following heads:

- a) Selection of Area
- b) Selection of Sample
- c) Collection of Data
- d) Presentation of Data and Tools used

#### (a) SELECTION OF AREA

The investigator has selected the area Kuniyamuthur because of the following reasons

1. Easy accessibility
2. On this aspect no study was conducted in this area.
3. The inhabitants of the area were very cooperative.

Many construction works are going on in this area

#### (b) SELECTION OF SAMPLE

The study covered a sample of 100 construction workers who are engaging themselves in construction. Random sampling Method was used to select the sample.

A Technique by which each of the sample is given equal chance of being selected is known as random Sampling.

(c) COLLECTION OF DATA

Data was collected through the Interview as "One in which the investigator personally comes in contact with the respondents from whom the information is to be obtained". The Investigator asks the respondent questions pertaining to enquiry and collects the desired information. Interview schedule was administered to the worker who are working in construction by the Investigator.

(d) PRESENTATION OF DATA AND TOOLS USED

The data collected were compiled and simple average method was used. The results were expressed in terms of percentages.

A pilot survey was conducted and the Interview schedule was restructured based on the critical assement of the data. The modified Interview schedule is given in APPENDIX I.

## Results and Discussion

## RESULTS AND DISCUSSION

The results and discussion on the study on "ECONOMIC STATUS OF WOMEN CONSTRUCTION WORKERS IN SELECTED AREA" is given under the following headings:

### I GENERAL BACKGROUND

- (a) NATURE OF FAMILY
- (b) FAMILY COMPOSITION
- (c) SEX COMPOSITION OF THE FAMILY NUMBERS
- (d) AGE COMPOSITION OF THE FAMILY NUMBERS
- (e) MOTHER TONGUE OF SAMPLE FAMILY
- (f) RELIGION OF THE RESPONDENTS
- (g) MARITAL STATUS OF THE RESPONDENTS
- (h) AGE OF MARRIAGE
- (i) EDUCATIONAL QUALIFICATION OF THE RESPONDENTS

### II EMPLOYMENT

- (a) NATURE OF EMPLOYMENT
- (b) CAREER IN CONSTRUCTION
- (c) DISTANCE TO WORK PLACE
- (d) INCOME FROM EMPLOYMENT
  - (i) MODE OF WAGE PAYMENT
  - (ii) AMOUNT OF INCOME RECEIVED
  - (iii) HOURS OF WORK

### III AVAILABILITY OF WORK

### IV NUMBER OF WORKING DAYS

### V WAGE DIFFERENTIAL ON SEX BASIS

### VI AVERAGE EARNING OF FEMALE AND MALE WORKERS

- VII MANAGEMENT OF INCOME
- VIII DISTRIBUTION OF INCOME IN THE FAMILY POOL
- IX SPENDING OF PERSONAL INCOME
- X PROPERTY OWNED BY CONSTRUCTION WORKERS
- XI ACCOUNT IN THE BANK
- XII HELP RECEIVED FROM OTHERS IN HOUSEHOLD-WORK
- XIII INVOLVEMENT IN HOUSEHOLD ACTIVITIES
- XIV PART TIME WORK OF WOMEN CONSTRUCTION WORKERS
- XV OPINION ABOUT WOMEN EMPLOYMENT
- XVI VIEWS ON STATUS OF WOMEN

40

ECONOMIC STATUS OF WOMEN CONSTRUCTION WORKERS IN A SELECTED AREA

I. GENERAL BACKGROUND

(a) NATURE OF FAMILY:- The families of most of the respondents under study were of the following nature. On the whole 70 were nuclear, 30 joint. Among poor people who do not have any property nuclear family are bound to grow.

(b) FAMILY COMPOSITION:- The size of respondents families varied between 1 to 7 members. Majority of the families have a family size of 1 to 6 persons. The size of the family is given in the following table.

TABLE I

DISTRIBUTION OF RESPONDENTS BY SIZE OF FAMILY

Size of families	Number of families	Percentage
Family with one person	-	-
Family with two persons	4	4
Family with three persons	14	14
Family with four persons	12	12
Family with five persons	11	11
Family with six persons	38	38
Family with seven persons	21	21
	100	100

(c) SEX COMPOSITION OF THE FAMILY NUMBERS The male were more in number than the female taking all the family members together 58.5 percent males and 41.5 percent were females. Table II indicates this fact.

TABLE IISEX COMPOSITION OF THE FAMILY

S.No	Sex	Number of Persons	Percentage
1	MALE	281	58.5
2	FEMALE	199	41.5
		480	100

(d) AGE COMPOSITION OF FAMILY MEMBERS:

In the families of respondents Age is composition is given in the following table III

TABLE IIIAGE COMPOSITION OF FAMILY MEMBERS

S.No.	AGE	NUMBER OF PERSONS	PERCENTAGE
1	1-5	20	4.17
2	6 -15	80	16.67
3	16-25	104	27.67
4	26-30	112	23.33
5	31-35	68	2.07
6	36-40	54	14.25
7	Above 50	42	8.75
		480	100

Persons below 15 years of age formed 4.2 of the total. Children between 16 to 25 years constituted 16.7 percent, Youth that is persons between 16 to 35 years of age constituted 70.9 percent

Middle aged that is persons between the age of 35 and 50 years were 14.2 percent and aged persons of 50 and above formed only 8.7 percent. Thus the families consisted of members mostly who are between 16 to 35 years of age.

(e) MOTHER TONGUE OF THE SAMPLE FAMILY

Details giving the mother tongue of the respondents are given in the following Table IV. Among the respondents Tamil speaking family consisted 32 percent. Those who spoke Kannadam constituted 28 percent of the sample. Telugue and Malayalam speaking families consisted equally 30 percent each. As a whole the respondents belong to different language speaking families.

TABLE IV

MOTHER TONGUE OF THE SAMPLE FAMILIES

S.No.	MOTHER TONGUE	NUMBER OF PERSONS	PERCENTAGE
1	TAMIL	32	32
2	MALAYALAM	30	30
3	KANNADAM	28	28
4	TELUGUE	10	10
		100	100

(f) RELIGION OF THE RESPONDENTS:

The religion to which the respondents belong is given in the following table V. Majority of the respondents (62 percent) belong to Hindu religion, Muslim formed 32 percent, Christians consisted of 26 percent. It shows in the sample nearly

majority of the respondents belong to Hindu religion.

TABLE V  
RELIGION OF THE RESPONDENTS

S.No.	RELIGION	NUMBER OF PERSONS	PERCENTAGE
1	HINDU	62	62
2	MUSLIM	32	32
3	CHRISTIAN	26	26

(g) MARITAL STATUS OF THE RESPONDENTS

The sample consisted of mostly married women. In the sample 65 percent . . . were married and the remaining 35 percent were unmarried.

(h) AGE OF MARRIAGE OF THE RESPONDENTS

The data regarding the age at marriage are very much conjctetual because the ages of the respondents also decide about the years of their married life. The following table VI indicates the age at marriage of the respondents.

TABLE VI

S.No.	AGE	NUMBER OF PERSONS	PERCENTAGE
1	14-15	0	0
2	16-25	12	18.46
3	26-35	40	61.54
4	36-40	13	20.0
		65	100

(1) EDUCATIONAL QUALIFICATION OF THE RESPONDENTS

In the sample majority of 85.5 percent respondents were educated up to 5th Class. 8.7 percent of sample studied upto 10th, only 5 percent of the respondents studied upto Higher Secondary. The whole picture shows that all of them know to read and write. None of them were illiterate. Table VII gives the details about the educational qualifications.

TABLE VIIEDUCATIONAL QUALIFICATION OF CONSTRUCTION WORKERS

S.No.	EDUCATION	NUMBER OF PERSONS	PERCENTAGE
1	1-5	58	85.8
2	6-10	6	8.9
3	Higher Secondary School	4	5.3
4	-	-	-
		68	100

II EMPLOYMENT(a) NATURE OF EMPLOYMENT

On the basis of the nature of employment the respondents could be placed under the categories, the permanent and temporary. A permanent worker for the purpose of this study was one who had been confirmed in the service of employers and who was expected

to work with the same employer, even after completing the project. A temporary worker was one who was given employment for a definite period by the employer and with whom an agreement whether expressed or implied had already been reached to this effect.

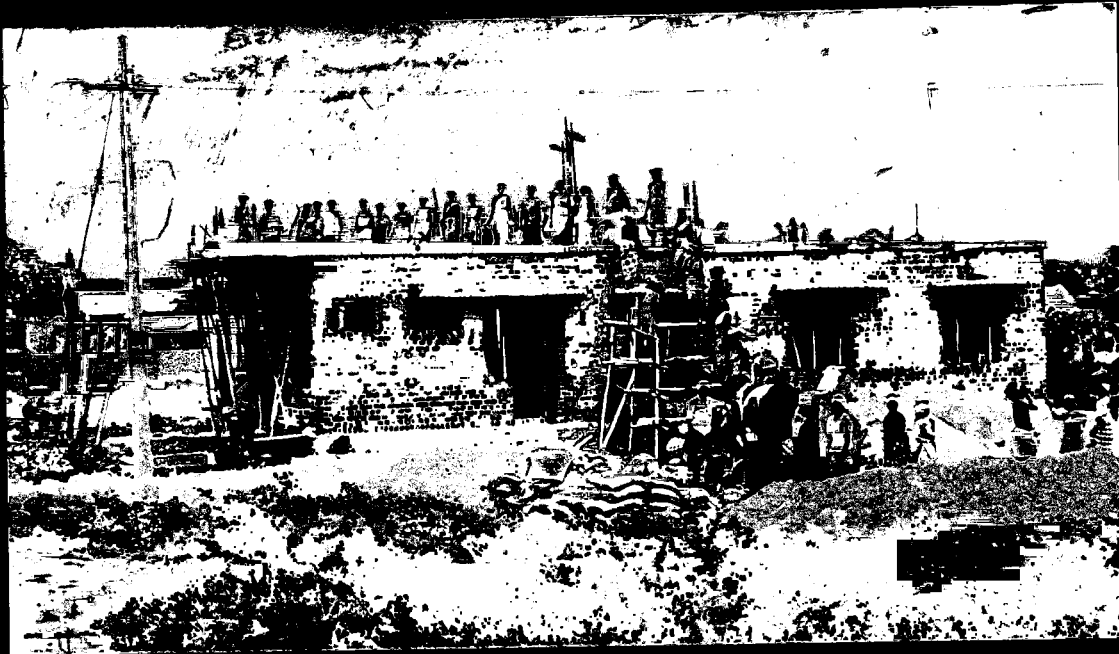
The following table No.VIII shows the type of employment of respondents.

TABLE VIII

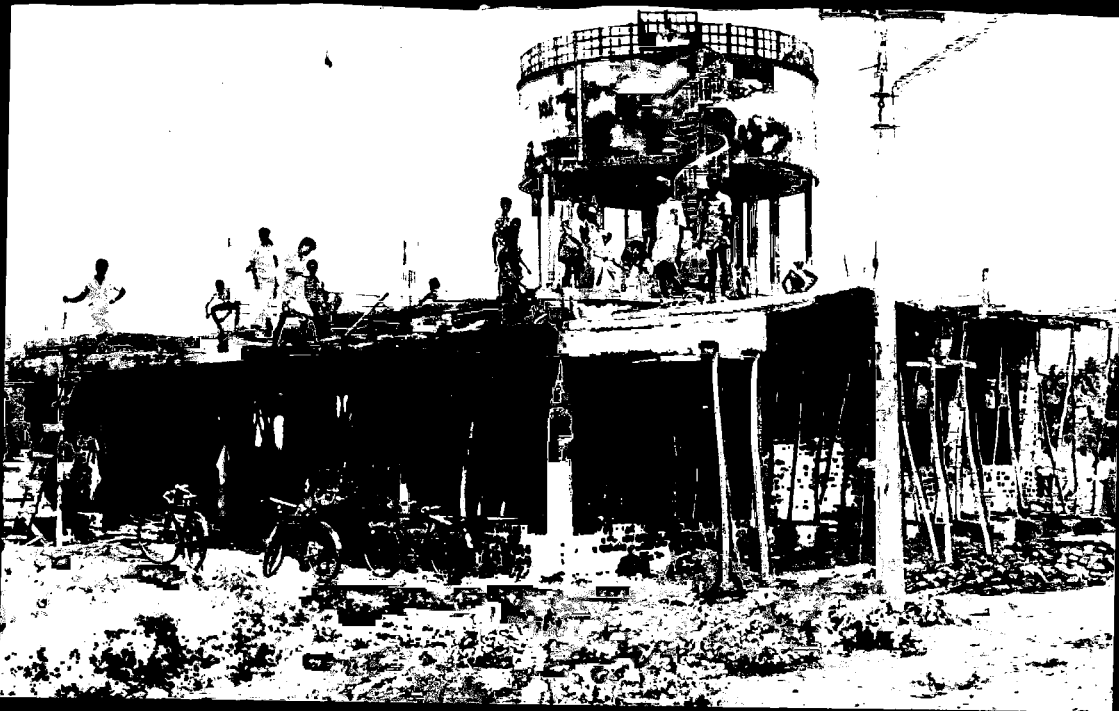
TYPE OF EMPLOYMENT

S.No	TYPE OF EMPLOYMENT	NUMBER OF PERSONS	PERCENTAGE
1	Permanent	22	32.4
2	Temporary	46	67.6
		68	100

According to the survey 32.4 percent workers work as permanent workers and 67.6 percent work as temporary workers. Temporary workers seems to be the majority in the sample. Women workers usually work in two capacities, chithal and another one Mummothi. Only men are working as masons. The following Table IX indicates the employment patterns of the respondents. The table reveals that 88.3 percent were working as chithal and only 11.7 percent were working as mommuthi. The analysis clearly reveals that majority of women construction workers were given the only work of chithal.



Lifting  
Load &  
Concrete  
work



ceiling  
work



Centering  
work

TABLE IX  
TYPE OF WORK

S.No.	TYPE OF WORK	NUMBER OF PERSONS	PERCENTAGE
1	MASON	-	-
2	CHITHAL	60	88.3
3	MUMUTHI	08	11.7
		68	100

(b) CAREER IN CONSTRUCTION:

The study revealed that most of the women workers employed in the construction had a career length of less than 15 years. The following Table X shows the experience of the sample is the present construction work. Only 3 percent of the sample had spent substantial portion of their life as construction worker (More than 26 years).

The Table No.X depicts the career length of the sample workers.

TABLE X  
CAREER IN CONSTRUCTION

S.No.	EXPERIENCE	NUMBER OF PERSONS	PERCENTAGE
1	5-10	17	.25
2	11-15	22	32.41
3	16-20	13	19.11
4	21-25	14	20.5
5	Above 30	2	3.0
		68	100

The table reveals that 25 percent had experience of less than 10 years 32.4 percent had experience of less than 15 years, 19.11 percent less than 20 years 20.5 percent less than 25 years and only 3 per cent had an experience less than 30 years. This shows that once they start as construction workers most probably they continue to work as construction workers. There were 3 main considerations behind the employment of women workers in the construction.

- (1) They were cheaper than the male workers.
- (2) They were docile by nature and better disciplined.
- (3) There were some jobs which male workers were reluctant to accept. Hence employment of women for such jobs were imperative.

(e) DISTANCE TO WORK PLACE

Judged by the place of living at the time survey the distance to work place was calculated. The Table XI gives idea about the residence of the worker and the distance they have to cover to reach the work place.

TABLE XI  
DISTANCE TO WORK PLACE

S.No	DISTANCE	NUMBER OF PERSONS	PERCENTAGE
1	2 K.M.	42	68.8
2	3 K.M.	21	30.9
3	4 K.M.	-	-
4	5 K.M.	5	7.4
5	6 K.M.	-	-
		68	100

(d) INCOME FROM EMPLOYMENT:

(1) MODE OF WAGE PAYMENT:

The mode of wage payment comes under two categories (i) Daily wages and (2) Weekly Wages. The actual mode of wage payment is given in the table No.XII

TABLE XII

MODE OF PAYMENT

S.No.	PATTERN OF INCOME	NUMBER OF PERSONS	PERCENTAGE
1	Daily	40	58.8
2	Weekly	28	41.2
3	Monthly	-	-
		68	100

In the sample 58.8 percent of women workers received daily wages and the rest received weekly wages. Usually permanent worker were given weekly wages and temporary workers received daily wages.

(ii) AMOUNT OF INCOME RECEIVED

The survey tried to collect data regarding the monthly income received by women respondents. Table XIII indicates the income received by the respondents. A look at the table shows that 89.7 percent of the respondents receives a monthly income less than Rs.400. Only 10.3 percent received more than Rs.400. But this income did not exceed more than Rs.600.

TABLE XIII  
AMOUNT OF INCOME RECEIVED

S.No.	INCOME RANGE	NUMBER OF PERSONS	PERCENTAGE
1	100-200	32	47.1
2	200-400	29	42.6
3	400-600	7	10.3
4	600-800	-	-
5	800-1000	-	-
		68	100

(iii) HOURS OF WORK:

Usually 8 hours a day and 48 hours a week were general rules in construction. The period of actual work was found invariably exceeding 8 hours a day and 48 hours a week. The commencement of work depends on two things.

- (1) The preparation made for concreting.
- (2) The approval of the labour department.

Usually work commenced in the morning and ended in the evening. The following Table No.XIV reveals the hours of work done by the women construction workers. 88.2 percent of the sample worked 8 hours per day and the rest 9 hours per day.

TABLE XIV  
HOURS OF WORK

S.No.	HOURS OF WORK	NUMBER OF PERSONS	PERCENTAGE
1	7	-	-
2	8	60	88.2
3	9	8	11.8
4	10	-	-
		68	100

### III AVAILABILITY OF WORK

Usually depending upon the demand for construction workers the worker got employment. The survey reveals that at Kuniyamuthur to some of women employees work was available easily (37.3 percent) but majority of them expressed their difficulty to get employment easily. The following Table No.XV shows the opinion of the sample workers regarding the availability of employment.

TABLE XV

#### AVAILABILITY OF EMPLOYMENT

S.No.	TYPE	NUMBER OF PERSONS	PERCENTAGE
1	Easily	27	39.3
2	Not easily	41	60.7
		68	100

The labour who said that the work is easily available expressed that the easy availability of work was due to fact that agricultural land were converted into construction sites. This happened because of the shortage of water for irrigation. The construction workers who said that the jobs were not easily available said that it was due to the non availability land and other building materials for constructions.

IV NUMBER OF WORKING DAYS

The study shows that majority (70.2 percent) of the sample worked less than 20 days per month and only 29.8 percent worked more than 20 days.

The following table XVI shows this. Usually permanent workers worked for 30 days.

TABLE XVI

NUMBER OF WORKING DAYS

S.No.	DAYS	NUMBER OF PERSONS	PERCENTAGE
1	1-10	-	-
2	10-20	48	70.2
3	20-30	20	29.8
		68	100

V WAGE DIFFERENTIAL ON SEX BASIS

Wage differential on sex basis were significantly marked in the construction work. The daily wages of women workers varied between rupee 12 to Rs.15 per day. The daily wage Rs.12 to Rs.45 for male. The following Table XVII indicates the details regarding the wage received by male and female workers. Among the male 52.4 percent received Rs.25 per day while 82.4 percent of female construction workers received only Rs.12 per day.

TABLE XVII

WAGE DIFFERENTIAL ON SEX BASIS

S.No.	MALE			FEMALE		
	WAGE	NUMBER OF PERSONS	PERCENTAGE	WAGE	NUMBER OF PERSONS	PERCENTAGE
1	12	4	9.5	12	56	82.4
2	25	22	52.4	25	12	17.6
3	45	16	38.1	45	-	-

VI AVERAGE EARNING OF FEMALE AND MALE WORKERS

Based on the wage received by male and female construction workers, the average earnings of both sex was calculated. Table XVIII reveals this. Majority of the male construction workers (69.04 percent) received as an average Rs.400 per month. But among the female workers only 58.83 percent received the same amount. Among male worker no one received less Rs.200 but among female worker 41.7 percent received between Rs.100 to Rs.200 per month. Among female workers no one received more than Rs.400 per month. But among the male worker 30.96 percent received an income between Rs.400 to Rs.600. This shows that lot of wage differential was there and women construction workers received less income than male construction workers.

TABLE XVIII  
AVERAGE EARNING PER MONTH (MALE AND FEMALE)

S.No.	MALE			FEMALE		
	EARNING	NUMBER OF PERSONS	PERCENTAGE	EARNINGS	NUMBER OF PERSONS	PERCENTAGE
1	100-200	-	-	100-200	28	41.17
2	200-400	29	69.04	200-400	40	58.83
3	400-600	13	30.96	400-600	-	-
4	600-800	-	-	-	-	-
		42	100		68	100

VII MANAGEMENT OF INCOME

The survey collected information about how the female workers handling their personal income. The study reveals that majority of female construction workers handled income by themselves 88.23 percent. Only 11.77 percent gave their income to their husbands. Table XIX explains this aspect.

As a whole women seemed to have freedom to handle their own income by themselves. If they have the capacity to earn their own income, they have the right also to spend as they like.

TABLE XIX  
MANAGEMENT OF INCOME

S.No.	HANDLE YOUR FAMILY INCOME	NUMBER OF PERSONS	PERCENTAGE
1	Handle by themselves	60	88.23
2	Handle husband	8	11.77
		68	100

### VIII DISTRIBUTION OF INCOME IN THE FAMILY POOL

The study tried to analyse the contribution of income to the family by both male and female construction workers. Among the male 76.2 percent contributed their full income for the maintenance of family. Among female workers 79.4 percents contributed their own income fully for the family's welfare. The rest contributed only partially their income to the family expenditure. Table XX shows this. An analysis of this provides us the information that nearly 80 percent of both male and female workers contributed their full income for their families. Only 20 percent seems to contribute partially.

TABLE XX

#### CONTRIBUTION OF INCOME TO FAMILY POOL

S.No.	ITEM	NUMBER OF PERSONS		PERCENTAGE	
		MALE	FEMALE	MALE	FEMALE
1	Fully	32	54	76.2	76.4
2	Partially	10	14	23.8	20.6
		42	68	100	100

#### IX SPENDING OF PERSONAL INCOME

The study wanted to find out how many of women construction workers spend their income personally. The table XXI indicates that 97 percent of the female workers spend their personal income themselves. Only 3 percent were not allowed to have their own choice in spending their personal income:

211

TABLE XXI

SPENDING OF PERSONAL INCOME

S.No.	ITEM	NUMBER OF PERSONS	PERCENTAGE
1	YES	66	97
2	No	2	3
		68	100

X PROPERTY OWNED BY CONSTRUCTION WORKER

Among the construction workers taken for sample only 10 persons expressed that they have property. Six of them have land and 4 of them have livestock. The rest did not have any property. The following table No.XXII shows the details.

TABLE XXII

PROPERTY OWNED BY CONSTRUCTION WORKERS

S.No.	PROPERTY	NUMBER OF PERSONS	PERCENTAGE
1	LAND	6	8.8
2	LIVESTOCK	4	5.9
3	NIL	58	85.3
		68	100

It is a noteworthy point that inspite of working only 14.7 percent of the sample managed to acruire property.

## XI ACCOUNT IN THE BANK

Since women construction worker earn in order to maintain their family, majority of them did not have any savings in the bank. Only 9 percent of the sample kept account in the bank. Table XXIII shows this. Women workers go for wok only to maintain their family and their income seems to be a major income of the family. Because of this many of them were not in a position to save in the bank.

TABLE XXIII

### BANK ACCOUNT OF WOMEN CONSTRUCTION WORKER

S.No.	ITEM	NUMBER OF PERSONS	PERCENTAGE
1	YES	6	8.8
2	No	62	91.2
		68	100

## XII HELP RECEIVED FROM OTHERS IN HOUSEHOLD WORK

Even though women construction workers are going out for work to make both ends meet, majority of them did not get help from others in their Household work. In their household work for themselves. Only 17.6 percent received help from others. The following Table XXIV shows this.

TABLE XXIV

HELP FROM OTHERS IN HOUSEHOLD WORK

S.No.	ITEM	NUMBER OF PERSONS	PERCENTAGE
1	YES	12	17.6
2	No	58	82.4
		68	100

XIII INVOLVEMENT IN HOUSEHOLD ACTIVITIES

Women as house wife, and mother had to do a lot of house works. They have to cook, grind, sweep, clean do the shopping and also to take care of the children. The study wanted to find out the hours of household work done by the women construction worker at home. The following Table XXV gives an idea about the time spend on various Household works. Cooking was a main work that has to be done by women at home. In our sample (38.2 percent) allotted one hour for cooking 41.3 percent to house for cooking and 20.5 percent three hours cooking, Two hours seemed to be the required time for cooking for nearly majority of the construction workers. Sweeping was done within one hour by 47.1 percent of the sample. The rest spend 2 hours for sweeping purpose. 55.8 percent of the sample allotted daily one hour for cleaning. 29.4 per cent devoted 2 hours to do the cleaning. The rest of the sample spent 3 hours to do the same. Women has to do the shopping also. Nearly half of the sample spent 3 hours for shopping. 32.4 percent spend four hours for shopping, 19.1 per cent allotted

two hours for purchasing goods and only 6 percent spend one hour for shopping. Women construction workers did not allot much time for gardening and health care. The main involvement was in the field of cooking, sweeping and cleaning. Since they have to go to town to buy whatever they needed for the maintenance of the family, shopping required more time

TABLE XXV

INVOLVEMENT IN HOUSEHOLD ACTIVITY

S.NO.	HOURS	COOKING		SWEEPING		GARDENING		HEALTH		CLEANING		SHOPPING	
		No. of persons	Per Centage	No. of persons	Per Centage	No. of Persons	Per centage	No. of Persons	Per Centage	No. of persons	Per Centage	No. of persons	Per Centage
1	1	26	38.2	32	47.1	Nil	Nil	Nil	Nil	38	55	4	5.9
2	2	28	41.38	36	52.9	Nil	Nil	Nil	Nil	20	29.4	13	19.1
3	3	10	20.50	-	Nil	Nil	Nil	Nil	Nil	10	14.8	29	42.6
4	4	-	-	-	Nil	Nil	Nil	Nil	Nil	-	Nil	22	32.4
5	5	-	-	-	Nil	Nil	Nil	Nil	Nil	-	Nil	-	-
		68	100	68	100	-	-	-	-	68	100	68	100

#### XIV PART TIME WORK DONE BY THE WORKERS

The main occupation of the sample workers is working in construction. But some of them engaged themselves in other activities to earn additional income to the family. Table No. XXVI indicates the details about it. According to the Table XXVI, 22 of them engaged themselves as helpers in the household worker for other families. This constituted 32.35 percent. 46 of them prepared food stuffs for sale. This constituted 62.67 percent. This proves that the wage which they receive from their work as construction workers is not adequate to maintain their families. In spite of hardship they have to engage themselves in additional work.

TABLE XXVI

#### PART TIME ACTIVITIES OF WOMEN CONSTRUCTION WORKERS

S.No.	ITEM	NUMBER OF PERSONS	PERCENTAGE
1	Daily Wage	22	32.35
2	Preparation of food	46	67.65
3	Weaving	-	-
4	Lending	-	-
		68	100

#### XV OPINION ABOUT WOMEN EMPLOYMENT

The survey collected the views of women construction workers about women involving in employment. Nearly 74 percent of the respondents felt that women should work to supplement their family income 26 percent of them opined that women should get the same wage as men for similar work. Table XXVII explains this.

This shows that nowadays single income seems to be less adequate to maintain the family. Everyone is aware of the need for to supplement the family income by some other sources.

TABLE XXVII  
VIEWS ON EMPLOYMENT

S.No.	ITEM	NUMBER OF PERSONS	PERCENTAGE
1	Do you feel women should work to supplement family income	50	73.35
2	A woman should get some wage as men for similar work	18	26.47
3	Working women should control over the earning	-	-
		68	100

XVI VIEWS ON STATUS OF WOMEN

The investigator tried to analyse that how for the women construction workers are conscious about their Economic Status. The answer to the question revealed that nearly 12 percent of the sample felt that the status of women is equal to men. Table XXVIII reveals the opinion of women construction workers regarding their Status. None of them felt that their position is inferior to men, Standing on their own legs for their Economic needs helped them to have self confidence and positive attitude towards life

TABLE XXVIII  
STATUS OF WOMEN

S.No.	TYPE	NUMBER OF PERSONS	PERCENTAGE
1	LOWER THAN MEN	-	-
2	EQUAL TO MEN	8	11.76
3	HIGHER THAN MEN	60	88.24
		68	100

## Summary and Conclusion

## SUMMARY AND CONCLUSION

The study on the "ECONOMIC STATUS OF WOMEN CONSTRUCTION WORKERS IN A SELECTED AREA" was under taken by the investigator with the main objectives of finding out the Economic Status of Women Construction Workers by taking into account. Their family set up, educational status, employment position, income, mode of spending income, their contribution to the family work and their attitude about women employment. After carefully collecting data from 100 Samples at Kuniamuthur in which 68 were women workers and rest male workers, the investigator analysed the data and has come to the following conclusions.

The families of most of the respondents were of nuclear type (70 percent), only 30 families were living as joing families. The nuclear type of family exists mainly because of the fact that many of them did not have any property.

The size of respondents families varied between 1 to 7 members. Majority of the families have a family size of 1 to 6 persons.

In the sample families male were more in number than the female, they constituted 58.5 percent of the families.

In the sample families 17.9 percent of the members were between the age group of 16 to 35 years, the constituted the larger part.

In the families 32 percent were speaking Tamil, 30 percent Malayam, 28 percent Kannadam and 10 percent Telugu. As a whole the respondents belonged to different language speaking families.

Hindus constituted 62 percent of the sample families. The next place went to Muslims, The rest of the sample were christians.

In the sample majority of women were married, at the age of 16 to 26. None of them seemed to be married below 15 years.

The educational qualification of the women construction workers proved that all of them know how to read and write. The noteworthy point is that 4 of them have learnt up to Higher Secondary level. Even though basic educational requirement is not needed to employment due to lack of suitable job opportunities, they might have engaged themselves as construction workers.

Women construction workers worked either as permanent workers or temporary workers. In the sample majority of them (67.67 percent) were temporary workers. The women construction workers work in ~~in~~ two capacities.

(1) Chithal and (2) Mummuthi. Women workers were given only particular works. Heavy works were done by males. In the sample majority of women construction workers 88.3 percent were working as chithal.

The study revealed that most of the women workers employed in the construction had a career length of less than 15 years. Only 3 percent of the sample had spent substantial portion of their life as construction workers (more than 26 years). Once they start as construction workers, they continue to be construction workers. The reasons for this were

- (a) They were cheaper than the male workers.
- (b) They were docile by nature and better disciplined.
- (c) They alone can do certain job in construction.

The mode of payment of women construction worker comes under two catagories.

(1) Daily and (2) weekly wages 58.8 percent of the sample women construction workers received daily wages and the rest received weekly wages. Usually permanent worker were given weekly wages and temporary workers received daily wages.

Women workers worked as a rule 8 hours per day and 48 hours per week. The period of actual work exceeded more than 8 hours per day, 48 hours per week.

The commencement of work depends on two things.

The preparation made for concreting and approval

of the labour department. The work commenced in the morning and ended in the evening. At times for particular work, they were asked to work even in the night. In the sample 88.2 percent worked 8 hours per day and the rest nine hours per day.

The women construction workers got employment depending upon the demand for construction. According to 39.3 percent of the sample workers work was available without difficulty because of the convertability of agricultural lands into construction sites due to nonavailability of water for irrigation. Some of them felt that the jobs were not easily available because of the non-availability of land and other building materials for constructions.

Among the women construction workers 70.2 percentage worked less than 20 days per month, and only 29.8 percentage worked more than 20 days. The workers who worked more than 20 days were permanent workers.

Wage differential on sex basis were significantly marked in construction work. Women got a wage which ranged between rupees 12 to Rs.15 per day. In this case even though the standard wage is Rs.15 the constructor deduced 3 rupees from women labourer. For male the wage rate ranged between Rs.12 to Rs.45. Male got more wage because their work was difficult and only male could perform them. Among male 52.4 percent of construction workers received only Rs.12 per day.

Based on wage received by male and female per day, the average earnings of both sex was calculated 69.4 percent of male workers received as an average between Rs.200 to Rs.400 per month. But among the female workers, only 58.83 percent received the same amount. Male workers seemed to receive more income (more than Rs.600), while the maximum average earnings received by women construction worker was Rs.400. This wage differential comes mainly due to the different type of work done by male and female workers.

The study reveals that majority of female construction workers handled their income themselves (88.23 percent). The rest handed over their income to their husbands. Because they earn by themselves women seemed to have freedom to handle their own income.

To maintain their families both male, female construction workers contributed their income. 80 percent of both male and female workers contributed fully and 20 contributed only partially.

Because of their ability to earn the women construction workers were in a position to spend their income personally. Majority of the female workers (27 percent) spend their income according to their wish<sup>and</sup> choice.

Regarding the ownership of property only (10 percent) in the sample had property. Six of them had land and four of them had

livestock. Majority of the women construction workers did not have any property.

Women construction workers earned to maintain their families. So they did not have anything to save in the bank. Among the women construction workers, only 9 percent had account in the bank.

The women construction workers had to do both house work and outside work. Study reveals that majority of them (82.4 percent) did not get help from others in their house hold work.

The study found out the hours of household work done by the workers. Cooking was the main work that has to be done by them. For cooking as an average they required two hours per day. Majority of them spent one hour for sweeping 2 hours for cleaning and some for of them spent one to three hours for shopping. They did not have time to spend for gardening and health care. Shopping required more hours because they had to purchase everything for the family, and they have to go to town and buy them.

Apart from their construction work some of them engaged themselves as helpers to household work and prepared food stuff for sale in order to get additional income.

The survey collected the views of women construction workers about involvement of women to employment. Nearly 74 percent

wanted women to work in order supplement their family income. Some of them expressed their desire that women should get the same wage as men for similar work.

As a whole women construction workers felt that economically because they earn by themselves, their position is either equal to men (11.76 percent) or higher than men, (88.24 percent). None of them felt that their position is inferior to men. Standing on their own leg for their economic needs helped them to have selfconfidence, and positive attitude towards life.

## Bibliography

BIBLIOGRAPHYBOOKS

- (1) Ashthana Pratima : "WOMEN'S MOVEMENT IN INDIA"  
1974 Vikas, Delhi
- (2) Baig, Tara Ali : "INDIA'S WOMEN POOR"  
1976 S. Chand New Delhi
- (3) Breitenbach Joseph : "WOMEN OF ASIA" Collings, London  
1968
- (4) Cousin, Margaret .E : "INDIAN WOMENHOOD TODAY"  
1947 Kitabistan, Allahabad.
- (5) Desai, Neeru : "WOMEN IN MODERN INDIA"  
1957 : Vora and Co., Bombay
- (6) Gadgil D.R. : "WOMEN IN THE WORKING FORCE IN INDIA"  
1965 Asia Publishing House, Bombay
- (7) Gupta A.R. : "WOMEN IN HINDU SOCIETY"  
1976 Jyotsna Prskashan, New Delhi.
- (8) Hate C.A. : "CHANGING STATUS OF WOMEN IN POST  
1969 INDEPENDENCE INDIA"
- (9) Indra Devaki : "STATUS OF WOMEN IN ANCIENT INDIA  
1955 SURVEY OF SOCIAL, RELIGIOUS, POLITIC  
AND LEGAL POSITION IN ANCIENT INDIA"
- (10) Jacobson Dorama : "WOMEN IN INDIA"  
1977 New Delhi
- (11) Jayal Shakambari : "STATUS OF WOMEN IN THE EPICS"  
1966 Motilal Banarasidas, Delhi

(12) Khanna Girija Varghese : "INDIA WOMEN TODAY"  
 A.Mariamamma 1978 Vikas Publishing House, Delhi

(13) Lam. Mithan J : "WOMEN IN INDIA"  
 1976 All India Women's Conference,  
 New Delhi

(14) Asok, Mitra : "THE STATUS OF WOMEN LITERACY  
 AND EMPLOYMENT"  
 1979 Allied Publishing New Delhi

(15) Nobel Margaret Elizabeth : "WOMEN OF MODERN INDIA"  
 1930 Oxford University Press, London

(16) Patai, Paphae (Ed) : "WOMEN IN THE MODERN WORLD"  
 1967 Free Press, New York.

(17) Sen Gupta Padmini : "WOMEN WORKERS IN INDIA"  
 1960 Asia Publishing House, Bombay

(18) Srinivas M.N. : "THE CHANGING POSITION OF INDIAN  
 WOMEN"  
 1969 Oxford University Press, Delhi

ARTICLES

- (1) Ahuja Patel Krishna : "DEVELOPMENT FOR WOMEN"  
1977 Mainstream,  
Vol. XVI No.7 October 15
- (2) Ahuja Patel Krishna : "WOMEN TECHNOLOGY AND DEVELOPMENT  
1979 PROCESS"  
Economical and Political Weekly
- (3) Bakshi B.P. : "THE CHANGING ROLE AND STATUS  
1964 OF WOMEN IN SOCIETY"  
Social Welfare April
- (4) Banaerjee : "WOMEN OF INDIA"  
1975 Mainstream  
Vol XIII No.45 July
- (5) Bajju Shree Lekhi : "ROLE OF WOMEN IN RURAL ECONOMIC  
1979 DEVELOPMENT"  
Yojana  
Vol XXVIII No.21, 16 November
- (6) Basu Timir, Calca's : "ECONOMIC'S STATUS HAS NEW DIMENSIONS"  
Sandat Makers 1977 Free Press Journal , 16 March
- (7) Bedekar, Malti : "WOMEN IN MAN'S WORLD"  
1975 Yojana Vol.XII No.13 and 14  
New Delhi, August 15
- (8) Chandra Sekhar S : "INDIAN WOMEN-MYTH AND REALITY"  
1968
- (9) Dang, Satyapal : "PLIGHT OF WOMEN SWEEPERS"  
1974 Mainstream Vol.2 No.15
- (10) Das, Nilima : "CAREER WOMEN'S PROBLEMS"  
1969 Decan Chronicle 30 November
- (11) Desai, Armaity .S : "WOMEN AND PART-TIME EMPLOYMENT  
1963 SOCIAL WELFARE" October

- (12) Gulati Leela : "OCCUPATIONAL DISTRIBUTION OF WORKERS WOMEN" An inter-state Comparison Economic and Political weekly, July-December 1962
- (13) Joshi Dina Naih : "THE PROBLEMS OF THE WELFARE OF WOMEN WORKERS"  
1981 Indian Journal of Social Worker, 22(3) December
- (14) Majumdar, Uina : "WOMEN WORKERS IN CHANGING ECONOMY" Yojana Vol.XIX No.7 1 May  
1975
- (15) Nurla, Uma : "INDIAN WOMEN IN CHANGING SOCIETY"  
1967 Social Welfare July
- (16) Rajula Devi A : "NEW ECONOMIC AVENUES FOR WOMEN"  
1978 Yojana Vol XXII No.2
- (17) Rao Prabha : "WOMEN LABOUR" Yojuna  
Vol.XIX No.7, May 1st
- (18) Sawant S.D. and : "RURAL FEMALE LABOUR AND ECONOMIC  
Dewan Ritu DEVELOPMENT"  
Economic Political Weekly June
- (19) Sinha Tarakeswari : "THE ROLE OF WOMEN IN INDIA TODAY"  
1963 Spokeman, Anniversary, Member
- (20) Saradamani K : "WOMEN IN EMPLOYMENT" Yojana  
1975 Vol.XIX Nos.13, New Delhi,  
Aug. 1975
- (21) Vanamala .M : "WOMEN LABOUR IN TELENGANA VIILAGE"  
1981 Mainstream Vol.XIX August

## REPORTS

(1) All India women's Conference, Seminar on Status of Women papers and proceeding, Bombay in April 1981.

(2) International Labour conference "WOMEN WORKS IN AN UN-ORGANISED WORLD" Forty Eight Session, Sixth Item on the Agenda Report VI(1)

Geneva: International Labour office 1963.

Seminar on status of Women: 'Mahila Abhyudaya samastha, ICSSR Regional Centre, Papers presented at the Seminar on Status of Indian Women, held at Hyderabad on 4th April 1981.

(3) Women in the India Labour force Papers and proceeding of a workshop, Asian Employment programme, Bangkok, Thailand 1981.

World Equipment Programme Research Working Papers, Rural Employment Policy Research Programme Economic Role and Status of Women.

BOOKS

- (1) ALICE K. LEOPOLV : WOMEN WORKERS, WOMEN'S BUREAU  
1958 Bulletin No.266
- (2) A. APPADORAI : STATUS OF WOMEN IN SOUTH ASIA  
1954
- (3) BHOOTHOLINGAM : EMPLOYMENT OF RURAL TRANSPORT  
1974
- (4) A. ARORA & R. CHOLE : SOCIAL WELFARE  
Construction workers of Delhi
- (5) WOMEN PLACE : CYNTHIA FUCHS  
1980 Epstein
- (6) DEVAKI JAIN : INDIAN WOMEN  
1986
- (7) Dr. GIRIJA KHANNA : INDIAN WOMEN TODAY
- (8) TARA ALI BALU : "WOMEN OF INDIA"  
1958 Forewarded by Jawaharlal Nehru  
Chief Edition
- (9) JOYCE LEBRA, JOY PAULSON : WOMEN AND WORK IN INDIA  
1984
- (10) K. MURALI MANOHAR : SOCIAL ECONOMIC STATUS OF INDIAN WOMEN  
1983
- (11) ALIC H. AMSDEN : "THE ECONOMICS OF WOMEN AND WORK"  
1980 Penquin Books

THESIS

Bahal, Sarojini, conditions of Labour of working women  
in the organised industries of Madhya Pradesh Pd.D

Thesis Jabalpur University 1966

- (1) Banerjee, Gaure Rani, Some aspect of the position  
of Women in India Ph.D., Thesis Allahabad University 1943
- (2) Satyavathi, Socio-Economic Conditions of Women  
workers in organised Industries of Uttrapradesh  
Ph.D Thesis, Agra University 1961.

## Appendix



iii. What are the reasons for your employment

How long have you been working in the present job?

IV. Details about employment:

S.No.	Type of Employment	V			Duration of work
		Permanent	Temporary	Part time work	

V. Details about income from employment

Type of Income		Pattern of income			Income received Amount
Permanent	Temporary	Daily	Weekly	Monthly	

- a) Is the employment easily available? YES/NO
- b) If 'YES' please give the reasons

(c) If 'NO' give the reasons

(VI) Do you normally get a day off in a week?

(VII) What is the nature of work allotted to male worker?

(VIII) How many days are the male workers employed per month?

(IX) How much is male workers paid per day?

(X) What is average earning per month for male worker?

(XI) Do you think women should earn?

(a) As a normal routine?

(b) To supplement family income?

(c) In the absence of income?

(d) Any others

XII. Do you handle your family income? YES/NO

If 'NO' who does it?

XIII Do you spend spend your personal income as you like?

Yes/No

XIV How much of your earning is passed on to the family pool

FULLY	PARTIALLY

XV. Do you have Bank Account YES/No

If 'YES'

- (a) Individually
- (b) Jointly with husband
- (c) Jointly with other persons

XVI Did your mother (or) Mother-in-law have to work for money at any time?

Yes/No

If yes what work

XIV What do you expect your daughter will do?

Yes/No

- (a) Work before marriage
- (b) Work after marriage
- (c) If 'Yes' what kind of work?

XVIII. Do you own any property?

If 'YES'

S.No	Property	Value
1.	Land	
2.	Livestock	
3.	Vehicles	
4.	Others	

XIX. Do you involve yourself in household activities?

Yes/No

If 'Yes'

ACTIVITY	Time spent
Cooking	
Sweeping	
Gardening	
Health Care	
Cleaning	
Child care	
Shopping	
Hobbies	

XX. Do you get others members of the family help you in the household work?

YES/NO

ACTIVITY	PERSON HELPING	TYPE OF HELP
COOKING		
SWEEPING		
GARDENING		
HEALTH CARE		
CLEANING		
CHILD CARE		
SHOPPING		
HOBBIES		

XXI. What are the problems faced by you going out for work?

Does it hamper w your household activities?

Apart from requires work do you engage yourself in any of the following activities?

Yes/No/Remark

- (a) Selling milk and vegetable?
- (b) Domestic labours?
- (c) Preparation of food stuff for sale?
- (d) Daily wage labour?
- (e) Spinning and weaving?
- (f) Money lending?
- (g) Sweing (or) knitting?
- (h) Any others

XXVI. Your views on employment on women

- (a) Do you feel women should work to supplement family income?
- (b) A women should get same wage as men for similar work?
- (c) Service condition are in facaroable to women?
- (d) The family tends to get neglected when women takes a job outside the house?
- (e) Working women should have control over the earning

XXIV Are you members of any association?

YES/No

If 'YES' Details

XXV What is your opinion about the status of women?

- (a) Lower than men
- (b) Equal to men
- (c) Higher than men
- (d) Difficult to say

XXVI What are the first three things you would like to see changed with reference to women's status?