

SMS BASED REMOTE SERVER MONITORING

M.KAVITHA

14PCS005

A Project Report Submitted to

**Avinashilingam Institute for Home Science and Higher Education for
Women University, Coimbatore-641043**

In Partial Fulfilment of the Requirements for the

award of the degree of

Master of Science in Computer Science

April, 2016

Signature of the supervisor

Signature of the Head of the Department

Signature of the External Examiner

SMS BASED REMOTE SERVER MONITORING

M.KAVITHA

14PCS005

A Project Report Submitted to

**Avinashilingam Institute for Home Science and Higher Education for
Women University, Coimbatore-641043**

In Partial Fulfilment of the Requirements for the

award of the degree of

Master of Science in Computer Science

April, 2016

ACKNOWLEDGEMENT

I would like to express my sincere thanks to God Almighty, for his constant love and grace that he has showered upon me.

I am very grateful to **Shri Dr. P. R. Krishna Kumar, Chancellor,** Avinashilingam Institute for Home Science and Higher Education for Women, Coimbatore, for his support and encouragement during the course of my study.

I heartful thanks **Dr.(Mrs).Premavathy Vijayan, Vice Chancellor In Charge** ,Avinashilingam Institute for Home Science and Higher Education for Women, Coimbatore for providing all the resources that facilitated the conduct of the present study.

I express my humble gratitude to **Dr.(Mrs).A.Venmathi, Registrar in charge,** Avinashilingam Institute for Home Science and Higher Education for Women, Coimbatore for providing all the facilities necessary for the study.

I am also thankful to **Dr.(Mrs).A.Parvathi Dean, Faculty of Science,** for granting the facility required.

I wish to place my deep sense of gratitude to **Dr.(Mrs).G.Padmavathi , Professor and Head,** Department of Computer science, for providing all the facilities to complete the project.

I owe a great deal of gratitude to my esteemed guide **Dr.(Mrs).Vasantha Kalyani David, Professor, Department of Computer Science,** for imparting tremendous ideas and well-timed support for the triumph of my project.

I take this unique opportunity to express my sincere thanks to my project coordinator **Dr.(Mrs).B.Sarojini, Assistant Professor, Department of Computer**

Science, for her kind advice and knowledgeable suggestions which helped me to complete my project successfully.

I would extend my hearty thanks to one and all who helped me directly or indirectly for successful completion of my project.

I also extend my gratitude to my parents and friends for their support, which steered me towards the successful completion of the project.

TABLE OF CONTENTS

S.NO	PARTICULARS	PAGE NO
1.	INTRODUCTION1	
	1.1 Problem Definition	
	1.2 Overview of the Project	
2	SYSTEM CONFIGURATION	2
	2.1 Hardware Specification	
	2.2 Software Specification	
	2.3 About the Software	
3	SYSTEM STUDY AND ANALYSIS9	
	3.1 Existing System	
	3.2 Proposed System	
	3.3 Feasibility System	
4	SYSTEM DESIGN	13
	4.1 Input Design	
	4.2 Output Design	
5	SYSTEM DEVELOPMENT	14
	5.1 Modules	
	5.2 Module Description	

6	SYSTEM TESTING AND IMPLEMENTATION	15
	6.1 System Testing	
	6.2 Implementation	
7	CONCLUSION	19
8	SCOPE FOR FUTURE ENHANCEMENT	20
9	BIBLIOGRAPHY	21
	APPENDIX	22
	A. System flow Diagram	
	B. Data flow Diagram	
	C. Database Design	
	D. Screen Shots	

SYNOPSIS

In Organizations with huge data centers having a lot of servers hosting numerous applications, it is always a major problem to monitor if each of the servers is up and functional all through the time.

Usually, when organizations host the applications on their servers on behalf of their clients, they sign up a service level agreement, specifying the allowed down time for each of the applications. Any lack of commitment on the part of the organizations in meeting the service level agreement could result in loss of business or legal action or both.

Hence, it becomes very important for the organizations to know if a server is down or non-functional and take corrective actions immediately. Unfortunately, for some critical applications, it is usually the client who informs that there is a problem with the server when he/she tries to logon to the application . Organizations would be very interested in knowing about these server failures immediately and take corrective measures. The error message is send to the mobile.

1.INTRODUCTION

1.1 PROBLEM DEFINITION:

Organizations with huge data centers having a lot of servers hosting numerous applications, there a major problem to monitor if each of the servers is up and functional all the time. It's a web-enabled project. This project offers user to enter the data through simple and interactive forms. The user is mainly more concerned about the validity of the data, whatever he is entering. There are checks on every stage of any new creation, data entry or updation so that the user cannot enter the invalid data, which can create problems at alater date. User is provided the option of monitoring the records he entered earlier. He can see the desired records with the variety of options provided by him.

1.2 OVERVIEW OF THE PROJECT:

In the current economic situation corporations as well as small companies are looking at various ways to cut down costs. One of the main ways to achieve this in developed countries is to outsource the work to developing countries. This outsourcing can be software development, R&D, Business Process Outsourcing or Knowledge Process Outsourcing.

In similar lines, executives are trying to outsource the activities of the personal assistants to developed countries. These activities involve scheduling appointments, managing calendars, filtering emails and making travel arrangements.

All these tasks can be performed by anyone without being present in the same office of the executive with the technological advancement made today. But there is no appropriate system to streamline the processes involved and allow seamless between the executive and the assistant even though they are on two different continents.

For this purpose a web based applications is developed, to allow executives and assistants to pair up.

2.SYSTEM CONFIGURATION

2.1 Hardware Specification:

Processor : Intel
Ram : 512 Mb
Hard Disk : 10 GB Space
Monitor : VGA Color (256)

2.2 Software Specification:

Operating System : Windows 7
Platform : Visual Studio
Scripting : ASP.NET with C#.NET
Backend : SQL server 2005

2.3 ABOUT THE SOFTWARE

FRONT END

ASP.NET

Server Application Development

Server-side applications in the managed world are implemented through runtime hosts. Unmanaged applications host the common language runtime, which allows your custom managed code to control the behavior of the server. This model provides you with all the features of the common language runtime and class library while gaining the performance and scalability of the host server.

The following illustration shows a basic network schema with managed code running in different server environments. Servers such as IIS and SQL Server can perform standard operations while your application logic executes through the managed code.

Server-Side Managed Code

ASP.NET is the hosting environment that enables developers to use the .NET Framework to target Web-based applications. However, ASP.NET is more than just a runtime host; it is a complete architecture for developing Web sites and Internet-distributed objects using managed code. Both Web Forms and XML Web services use IIS and ASP.NET as the publishing mechanism for applications, and both have a collection of supporting classes in the .NET Framework.

XML Web services, an important evolution in Web-based technology, are distributed, server-side application components similar to common Web sites. However, unlike Web-based applications, XML Web services components have no UI and are not targeted for browsers such as Internet Explorer and Netscape Navigator. Instead, XML Web services consist of reusable software components designed to be consumed by other applications, such as traditional client applications, Web-based applications, or even other XML Web services. As a result, XML Web services technology is rapidly moving

application development and deployment into the highly distributed environment of the Internet.

If you have used earlier versions of ASP technology, you will immediately notice the improvements that ASP.NET and Web Forms offers. For example, you can develop Web Forms pages in any language that supports the .NET Framework. In addition, your code no longer needs to share the same file with your HTTP text (although it can continue to do so if you prefer). Web Forms pages execute in native machine language because, like any other managed application, they take full advantage of the runtime. In contrast, unmanaged ASP pages are always scripted and interpreted. ASP.NET pages are faster, more functional, and easier to develop than unmanaged ASP pages because they interact with the runtime like any managed application.

The .NET Framework also provides a collection of classes and tools to aid in development and consumption of XML Web services applications. XML Web services are built on standards such as SOAP (a remote procedure-call protocol), XML (an extensible data format), and WSDL (the Web Services Description Language). The .NET Framework is built on these standards to promote interoperability with non-Microsoft solutions.

For example, the Web Services Description Language tool included with the .NET Framework SDK can query an XML Web service published on the Web, parse its WSDL description, and produce C# or Visual Basic source code that your application can use to become a client of the XML Web service. The source code can create classes derived from classes in the class library that handle all the underlying communication using SOAP and XML parsing. Although you can use the class library to consume XML Web services directly, the Web Services Description Language tool and the other tools contained in the SDK facilitate your development efforts with the .NET Framework.

If you develop and publish your own XML Web service, the .NET Framework provides a set of classes that conform to all the underlying communication standards, such as SOAP, WSDL, and XML. Using those classes enables you to focus on the logic of your service, without concerning yourself with the communications infrastructure required by distributed software development.

Finally, like Web Forms pages in the managed environment, your XML Web service will run with the speed of native machine language using the scalable communication of IIS.

Core Features

- Ability to limit how long the `[[regular expression]]` engine will attempt to resolve a regular expression before it times out.
- Ability to define the culture for an `[[application domain]]`.
- Console support for `[[Unicode]]` (`[[UTF-16]]`) encoding.
- Support for versioning of cultural string ordering and comparison data.
- Better performance when retrieving resources.
- `[[Zip (file format)|Zip]]` compression improvements to reduce the size of a compressed file.
- Ability to customize a `[[reflection context]]` to override default `[[reflection (computer programming)|reflection]]` behavior through the `"CustomReflectionContext"` class.

Introduction to C#

C#, pronounced [c sharp](#), is a computer language used to give instructions that tell the computer what to do, how to do it, and when to do it. This is a universal language that is used on many [operating systems](#), including Microsoft Windows. C# is one of the languages used in the Microsoft .NET Framework. The Microsoft .NET Framework is a library of objects that create or draw things on the computer.

The programs we will write are meant to give instructions to the computer about what to do, when to do something, and how to do it. You write these instructions in an easy to understand English format, using words we will study. This means that a regular instruction uses normal text with alphabetic characters, numbers, and non-readable symbols. Normally, you can write your instructions using any text editor such as Notepad, WordPad, WordPerfect, or [Microsoft Word](#), etc. When writing your instructions, there are rules you must follow and suggestions you should observe..

The group of instructions used by your program is also referred to as code. To assist you with writing code, Microsoft Visual C# 2008 includes a text editor referred to as the Code Editor. This is the window that displays when you have just created a console application. Besides the Code Editor, the integrated development [interface](#)(IDE) of the Microsoft Visual C# 2008 is made of various parts, which we will review when necessary.

BACK END

SQL Server

A database management, or DBMS, gives the user access to their data and helps them transform the data into information. Such database management systems include dBase, paradox, IMS, SQL Server and SQL Server. These systems allow users to create, update and extract information from their database.

A database is a structured collection of data. Data refers to the characteristics of people, things and events. SQL Server stores each data item in its own fields. In SQL Server, the fields relating to a particular person, thing or event are bundled together to form a single complete unit of data, called a record (it can also be referred to as row or an occurrence). Each record is made up of a number of fields. No two fields in a record can have the same field name.

During an SQL Server Database design project, the analysis of your business needs identifies all the fields or attributes of interest. If your business needs change over time, you define any additional fields or change the definition of existing fields.

SQL Server tables

SQL Server stores records relating to each other in a table. Different tables are created for the various groups of information. Related tables are grouped together to form a database.

Primary keys:

Every table in SQL Server has a field or a combination of fields that uniquely identifies each record in the table. The Unique identifier is called the Primary Key, or simply the Key. The primary key provides the means to distinguish one record from all other in a table. It allows the user and the database system to identify, locate and refer to one particular record in the database.

Relational DataBase:

Sometimes all the information of interest to a business operation can be stored in one table. SQL Server makes it very easy to link the data in multiple tables. Matching an employee to the department in which they work is one example. This is what makes SQL Server a relational database management system, or RDBMS. It stores data in two or more tables and enables you to define relationships between the table and enables you to define relationships between the tables.

Foreign Key

When a field in one table matches the primary key of another field is referred to as a foreign key. A foreign key is a field or a group of fields in one table whose values match those of the primary key of another table.

Referential Integrity

Not only does SQL Server allow you to link multiple tables, it also maintains consistency between them. Ensuring that the data among related tables is correctly matched is referred to as maintaining referential integrity.

Features of SQL server (RDBMS)

SQL SERVER is one of the leading database management systems (DBMS) because it is the only Database that meets the uncompromising requirements of today's most demanding information systems. From complex decision support systems (DSS) to the most rigorous online transaction processing (OLTP) application, even application that

require simultaneous DSS and OLTP access to the same critical data, SQL Server leads the industry in both performance and capability

SQL SERVER is a truly portable, distributed, and open DBMS that delivers unmatched performance, continuous operation and support for every database.

SQL SERVER RDBMS is high performance fault tolerant DBMS which is specially designed for online transactions processing and for handling large database application.

SQL SERVER with transactions processing option offers two features which contribute to very high level of transaction processing throughput, which are

- The row level lock manager

3. SYSTEM STUDY AND ANALYSIS

After analyzing the requirements of the task to be performed, the next step is to analyze the problem and understand its context. The first activity in the phase is studying the existing system and other is to understand the requirements and domain of the new system. Both the activities are equally important, but the first activity serves as a basis of giving the functional specifications and then successful design of the proposed system. Understanding the properties and requirements of a new system is more difficult and requires creative thinking and understanding of existing running system is also difficult, improper understanding of present system can lead diversion from solution.

3.1 Existing System

- Access Management process to provide Admin privileges to selected personnel.
- Organization and Servers information capturing Process.
- Server Monitoring Criteria setup Process.
- Corrective Action Completion Process.
- Historical data archiving and cleanup process.

3.2 Proposed System

There is a need for a web based application which can capture all the organization and data center details and remotely check if each of servers is up and running all the time. This monitoring piece of the application keeps pinging each of the servers at the specific intervals and based on the rules setup and response received it sends out an SMS to a predefined list of specialists whenever there is a failure. This SMS will also contain the information related to the server that has failed and also the time at which it had failed the error message will be send to the specified organization.

3.3 Feasibility Study

Preliminary investigation examines project feasibility, the likelihood the system will be useful to the organization. The main objective of the feasibility study is to test the Technical, Operational and Economical feasibility for adding new modules and debugging old running system. All system is feasible if they are unlimited resources and infinite time. There are aspects in the feasibility study portion of the preliminary investigation:

- Technical Feasibility
- Operation Feasibility
- Economical Feasibility

3.3.1. Technical Feasibility

The technical issue usually raised during the feasibility stage of the investigation includes the following:

- Does the necessary technology exist to do what is suggested?
- Do the proposed equipments have the technical capacity to hold the data required to use the new system?
- Will the proposed system provide adequate response to inquiries, regardless of the number or location of users?
- Can the system be upgraded if developed?
- Are there technical guarantees of accuracy, reliability, ease of access and data security?

Earlier no system existed to cater to the needs of ‘Secure Infrastructure Implementation System’. Thus it provides an easy access to the users. The database’s purpose is to create, establish and maintain a workflow among various entities in order to facilitate all concerned users in their various capacities or roles. Permission to the users would be granted based on the roles specified. Therefore, it provides the technical

guarantee of accuracy, reliability and security. The software and hard requirements for the development of this project are not many and are already available in-house at NIC or are available as free as open source. The work for the project is done with the current equipment and existing software technology. Necessary bandwidth exists for providing a fast feedback to the users irrespective of the number of users using the system.

3.3.2. Operational Feasibility

Proposed projects are beneficial only if they can be turned out into information system. That will meet the organization's operating requirements. Operational feasibility aspects of the project are to be taken as an important part of the project implementation. Some of the important issues raised are to test the operational feasibility of a project includes the following: -

- Is there sufficient support for the management from the users?
- Will the system be used and work properly if it is being developed and implemented?

This system is targeted to be in accordance with the above-mentioned issues. Beforehand, the management issues and user requirements have been taken into consideration. So there is no question of resistance from the users that can undermine the possible application benefits.

The well-planned design would ensure the optimal utilization of the computer resources and would help in the improvement of performance status.

3.3.3. Economic Feasibility

A system can be developed technically and that will be used if installed must still be a good investment for the organization. In the economical feasibility, the development cost in creating the system is evaluated against the ultimate benefit derived from the new systems. Financial benefits must equal or exceed the costs.

The system is economically feasible. It does not require any additional hardware or software. Since the interface for this system is developed using the existing resources and

technologies available and hence there , There is nominal expenditure and economical feasibility.

4. SYSTEM DESIGN

Software design sits at the technical kernel of the software engineering process and is applied regardless of the development paradigm and area of application. Design is the first step in the development phase for any engineered product or system. The designer's goal is to produce a model or representation of an entity that will later be built. Beginning, once system requirements have been specified and analyzed, system design is the first of the three technical activities - design, code and test that is required to build and verify software.

4.1 INPUT DESIGN

The input design is the process of converting the user-oriented inputs into the computer-based format. For providing a good input design, the application uses easy data input and selection features. The design of input focuses on controlling the amount of input, requires controlling the errors, extra steps and keeping the process simple.

The input design is an extended one that covers all the modules in a systematic way. It includes the design of organization, user and report. The details can be entered in the organization and user module.

4.2 OUTPUT DESIGN

The output design presents the manipulated data to the end user. The admin can view the organization and user details. Admin can use the ID and password to activate or deactivate the user and organization. If the system can stop the process and some physical problem in our system, then a message is sent to the mobile. The message can be viewed remotely. Reports can be generated.

- Screen shots
- Reports
- Message

5. SYSTEM DEVELOPMENT

5.1 MODULES

- Login
- Organization
- User
- Logout
- Report

5.2MODULE DESCRIPTION

Login

This module contains admin and user page. Admin can use the id and password to enter the admin page. User also can use the id and password to enter the details and send the message.

Organization

Allows Admin users to capture and update Organization information related to Users, Specialists, Servers, IP addresses etc

User

Allows Admin users to capture and update user information related to name, orgid,phoneno,emailidetc

Logout

Using this module and the customer can logout from the module.

Report

Allows Admin users to run reports based on Organization, Servers, Specialists and Corrective action taken.

6. SYSTEM TESTING AND IMPLEMENTATION

6.1 INTRODUCTION

Testing is one of the most important phases in the software development activity. In software development life cycle (SDLC), the main aim of testing process is the quality; the developed software is tested against attaining the required functionality and performance.

During the testing process the software is worked with some particular test cases and the output of the test cases are analyzed whether the software is working according to the expectations or not.

The success of the testing process in determining the errors is mostly depends upon the test case criteria, for testing any software we need to have a description of the expected behavior of the system and method of determining whether the observed behavior confirmed to the expected behavior.

LEVELS OF TESTING

Since the errors in the software can be injured at any stage. So, we have to carry out the testing process at different levels during the development. The basic levels of testing are Unit, Integration, System and Acceptance Testing.

The Unit Testing is carried out on coding. Here different modules are tested against the specifications produced during design for the modules. In case of integration testing different tested modules are combined into sub systems and tested in case of the system testing the full software is tested and in the next level of testing the system is tested with user requirement document prepared during SRS.

There are two basic approaches for testing. They are

Functional Testing: In Functional Testing test cases are decided solely on the basis of requirements of the program or module and the internals of the program or modules are not considered for selection of test cases. This is also called Black Box Testing

Structural Testing: In Structural Testing test cases are generated on actual code of the program or module to be tested. This is called White Box Testing.

TESTING PROCESS

A number of activities must be performed for testing software. Testing starts with test plan. Test plan identifies all testing related activities that need to be performed along with the schedule and guide lines for testing. The plan also specifies the levels of testing that need to be done, by identifying the different testing units. For each unit specified in the plan first the test cases and reports are produced. These reports are analyzed.

Test Plan: Test plan is a general document for entire project, which defines the scope, approach to be taken and the personal responsible for different activities of testing. The inputs for forming test plane are

Project plan

Requirements document

System design

Test Case Specification: Although there is one test plan for entire project test cases have to be specified separately for each test case. Test case specification gives for each item to be tested. All test cases and outputs expected for those test cases.

Test Case Execution and Analysis: The steps to be performed for executing the test cases are specified in separate document called test procedure specification. This document specify any specify requirements that exist for setting the test environment and describes the methods and formats for reporting the results of testing.

Unit Testing: Unit testing mainly focused first in the smallest and low level modules, proceeding one at a time. Bottom-up testing was performed on each module. As developing a driver program, that tests modules by developed or used. But for the purpose of testing, modules themselves were used as stubs, to print verification of the actions performed. After the lower level modules were tested, the modules that in the next higher level those make use of the lower modules were tested.

Each module was tested against required functionally and test cases were developed to test the boundary values.

Integration Testing: Integration testing is a systematic technique for constructing the program structure, while at the same time conducting tests to uncover errors associated with interfacing. As the system consists of the number of modules the interfaces to be tested were between the edges of the two modules. The software tested under this was incremental bottom-up approach.

Bottom-up approach integration strategy was implemented with the following steps.

- Low level modules were combined into clusters that perform specific software sub functions.
- The clusters were then tested.

System Testing: System testing is a series of different tests whose primary purpose is to fully exercise the computer-based system. It also tests to find discrepancies between the system and its original objective, current specifications.

6.2 IMPLEMENTATION

System implementation is the part of the software engineering life cycle, where, the design artifacts are converted to a working application. The stage of systems development in which hardware and software are acquired, developed and installed the system is tested and documented, people are trained to operate and use the system. After proper testing and validation, the question arises whether the system can be implemented or not.

In the existing system the data can be maintained manually. In proposed system the user and organization can enter the details in systematically .If the system have some problem we can send the notification message to the specified organization which helps the user in time consuming by sending the message at any place and the organization can check the message at remote location.This method is very useful for the user.

7.CONCLUSION

It has been a great pleasure for me to work on this exciting and challenging project. This project proved good for me as it provided practical knowledge of not only programming in ASP.NET and C#.NET web based application and know some extent Windows Application and SQL Server, but also about all handling procedure related with **“SMS Based Remote Server Monitoring”**.It also provides knowledge about the latest technology used in developing web enabled application and client server technology that will be great demand in future. This will provide better opportunities and guidance in future in developing projects independently.

8. SCOPE FOR FUTURE ENHANCEMENT

The program is designed in way that new modules can be added easily .Any of the needed updates can be done very easily with the help of the source code.

The coding used is simple so any programmer can handle in easy way. In future development the SMS can send automatically. This method is very convenient for the organizations.

9.BIBLIOGRAPHY

References:

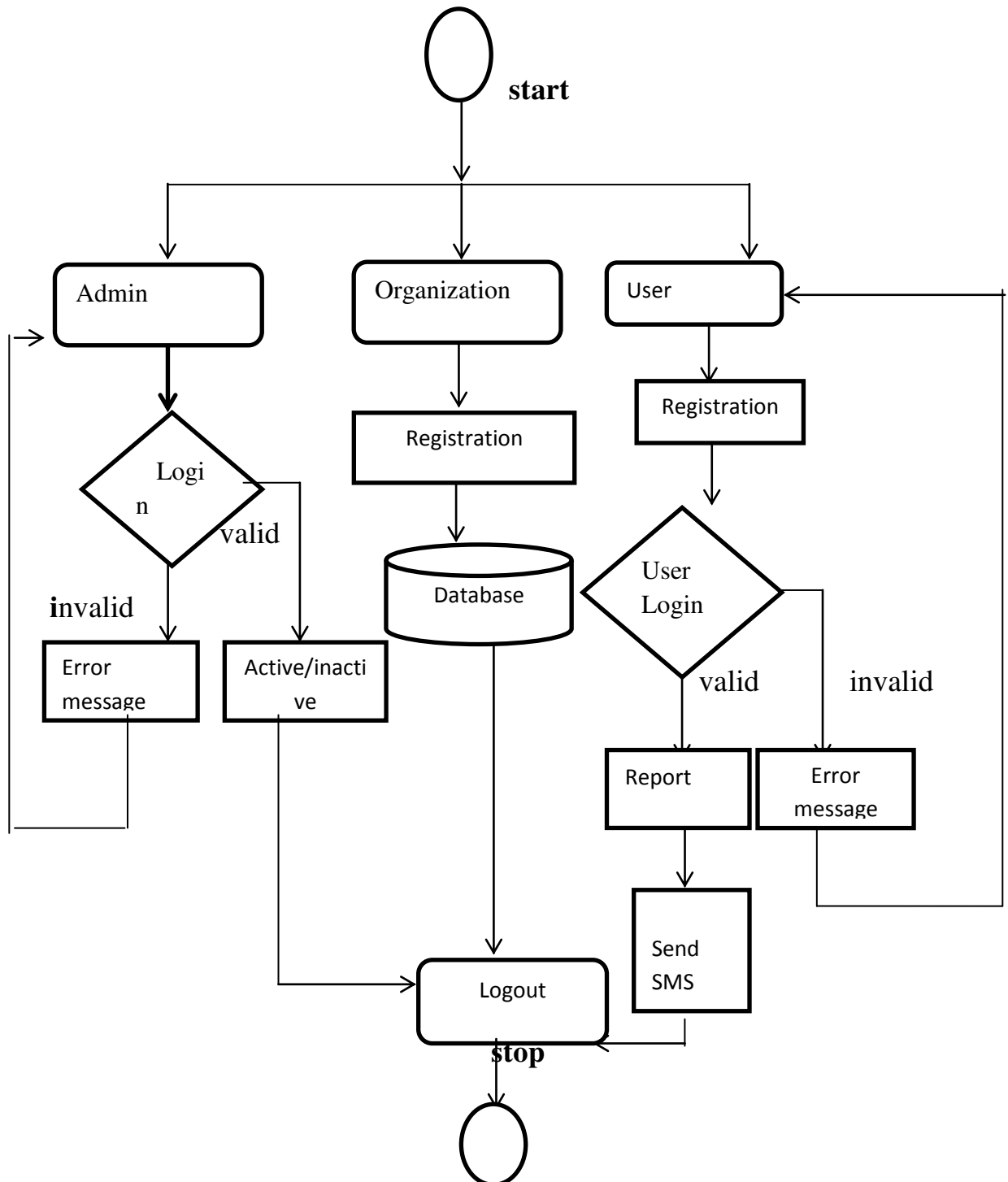
- 1..Adam Freeman, Matthew MacDonald, Mario Szpuszta, "Pro ASP .NET 4.5 in C#", APress; 5th New edition edition (8 July 2013)
- 2.Christiannagel , “professional C#6 and .Net” 2016.
- 3.Rajib Mall, "Fundamentals of Software Engineering", Prentice Hall India Learning Private Limited; Fourth edition (2 April 2014)

Online References:

1. www.msdn.microsoft.com/net/quickstart/aspplus/default.com
- 2 .www.codetutorials.com/KB/aspnet
3. www.tutorialspoint.com/asp.net/asp.net_introduction.htm
- 4.www.w3schools.com/aspnet/

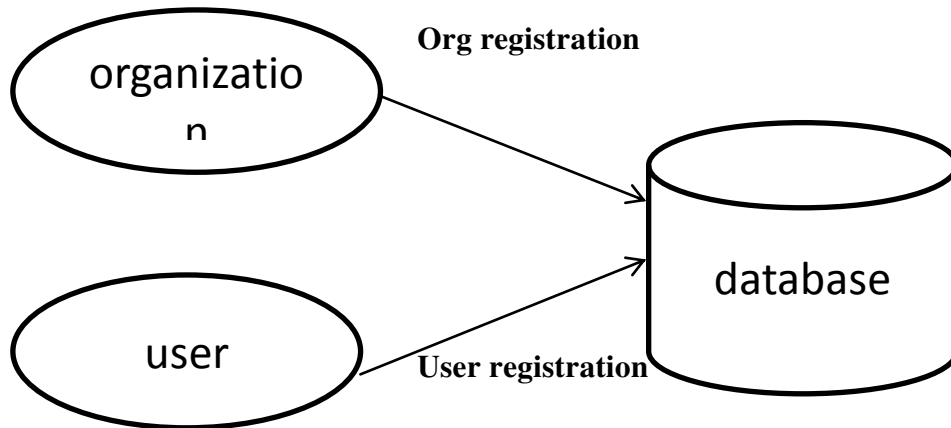
APPENDIX

A.SYSTEM FLOW DIAGRAM

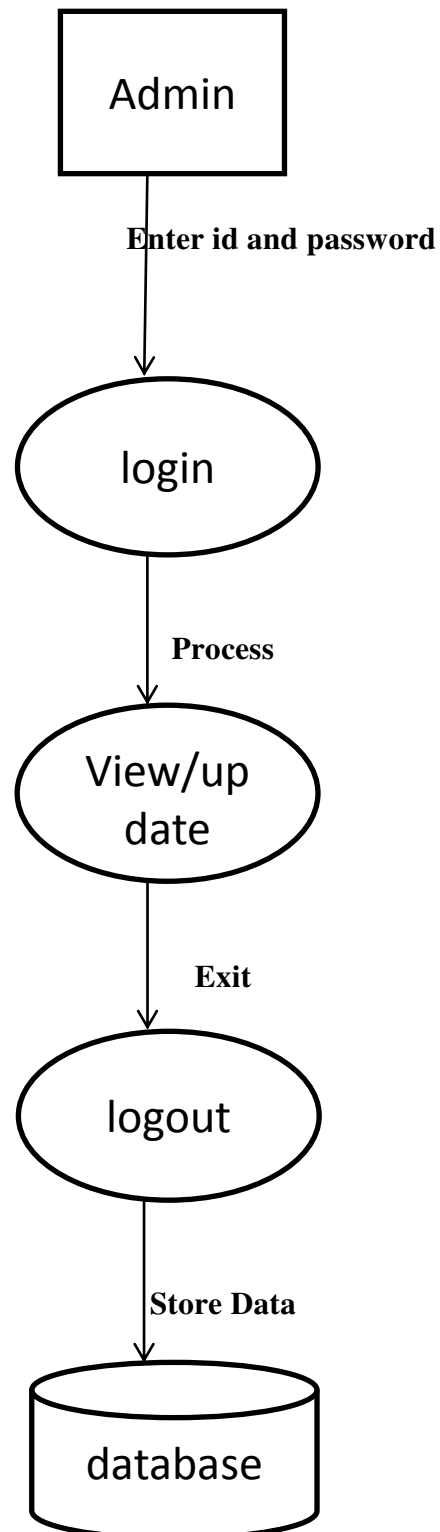


B.DATA FLOW DIAGRAM

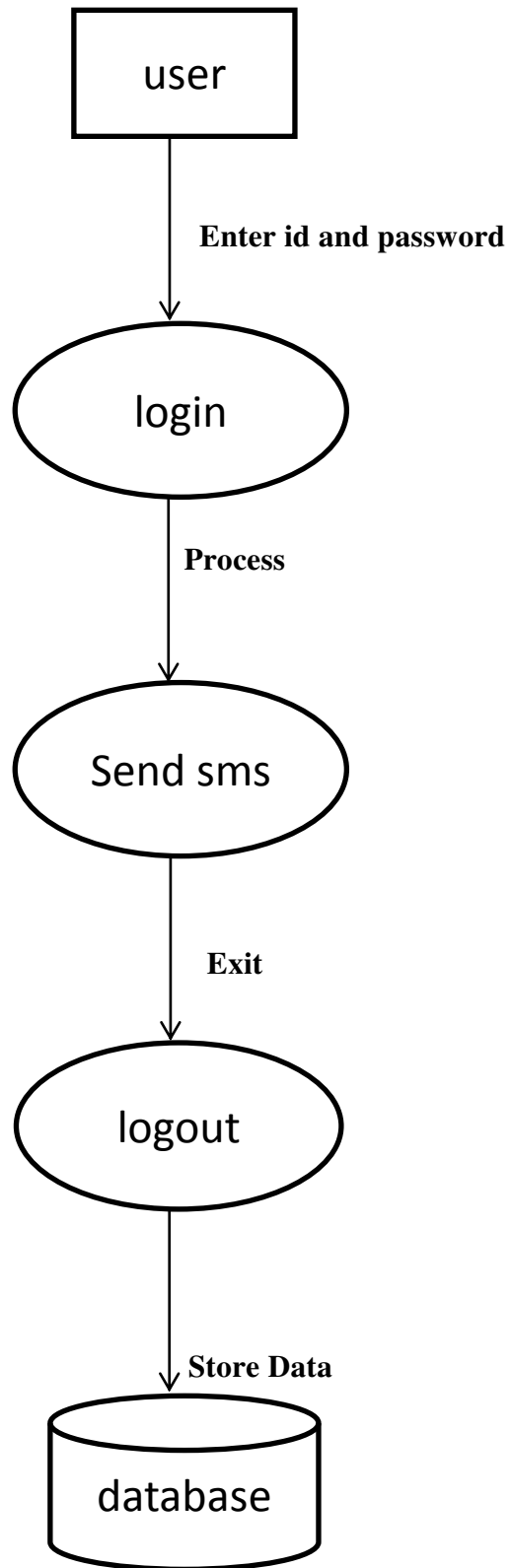
Level 0



Level 1



Level 2



C.TABLE DESIGN

Table 1:login

S.no	Data Field	Data Type
1.	Account type	Varchar(30)
2.	User id	Varchar(30)
3.	Password	Varchar(30)

Table 2 : user

S.no	Data Field	Data Type
1.	OrgId	Int(10)
2.	UserId	Int(10)
3.	UserName	Varchar(30)
4.	Password	Varchar(30)
5.	Address	Varchar(30)
6.	Mobile	Int(30)
7.	eMail	Varchar(50)

Table 3 : Organization

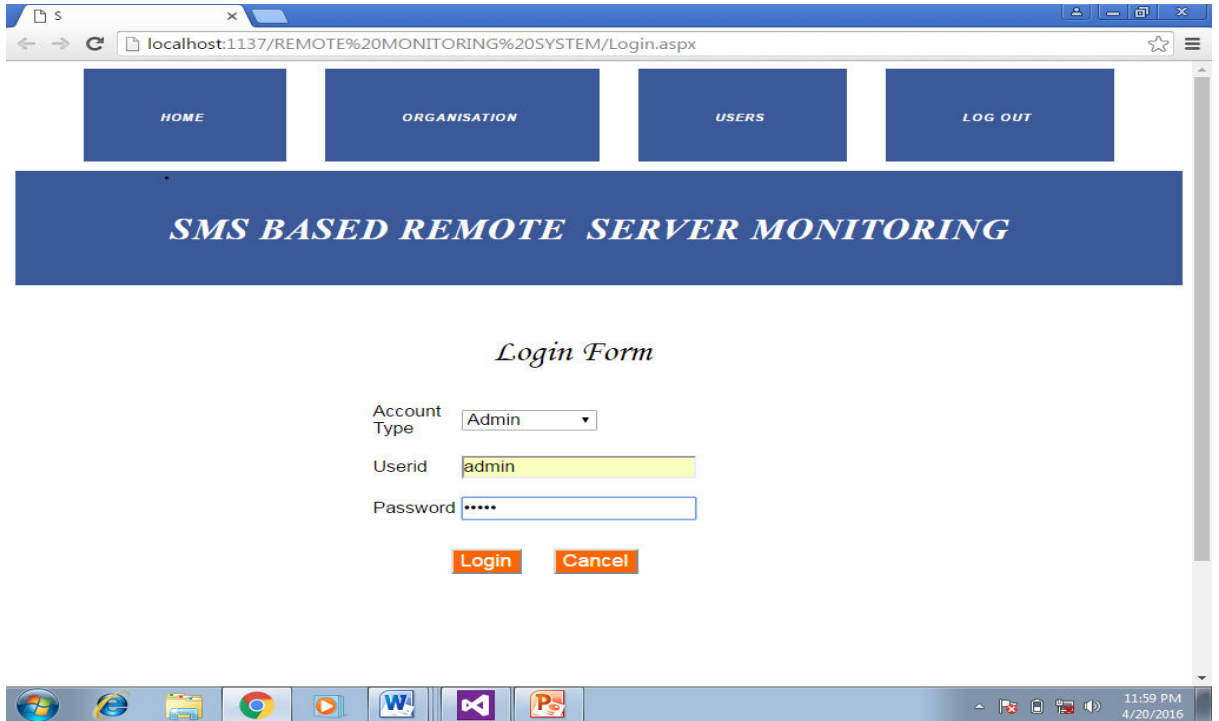
S.no	Data Field	Data Type
1.	OrgId	Int(20)
2.	OrgName	Varchar(30)
3.	Password	Varchar(30)
4.	Address	Varchar(30)
5.	Mobile	Int(20)
6.	eMail	Varchar(50)
7.	Status	Varchar(50)

Table 4 : Report

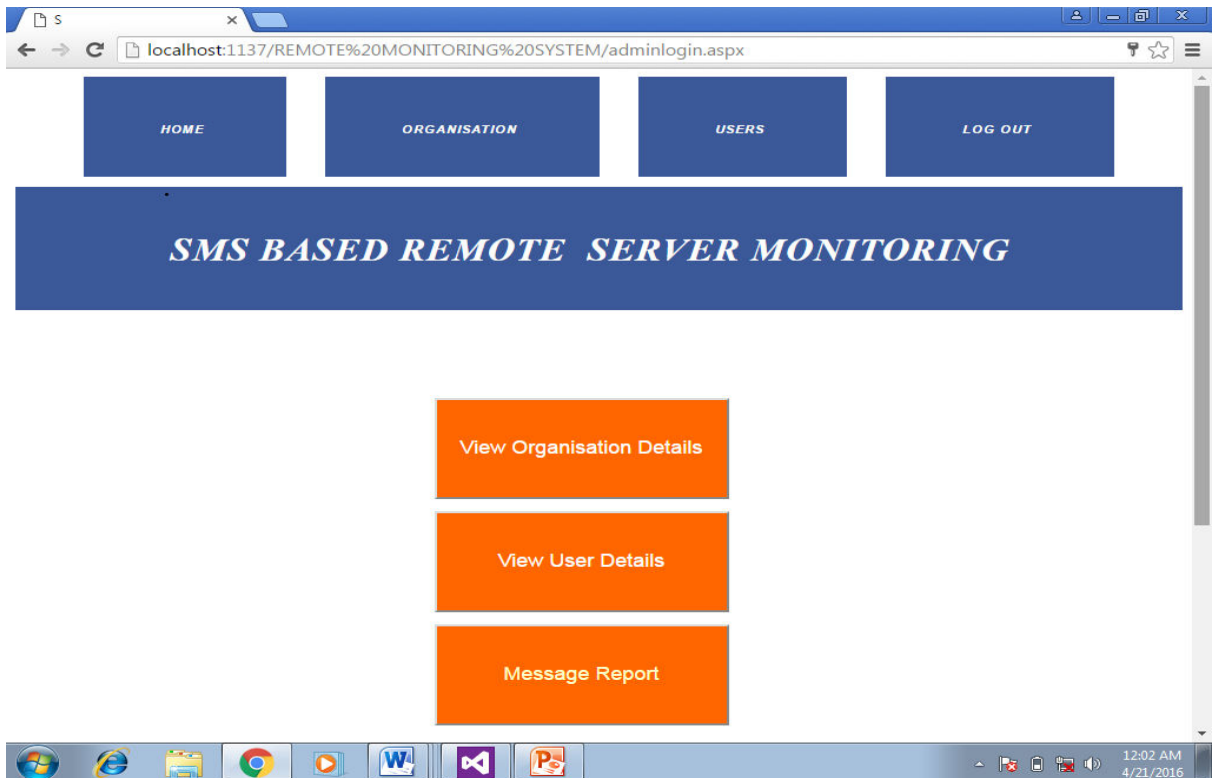
S.no	Data Field	Data Type
1.	OrgId	Int(20)
2.	UserId	Int(20)
3.	Mobile	Int(20)
4.	Details	Varchar(30)
5.	Server Name	Varchar(30)
6.	IP Address	Varchar(50)

C.SCREEN SHOTS

1.Home



2. Admin



3.Organization Registration

localhost:1137/REMOTE%20MONITORING%20SYSTEM/Organisation.aspx

HOME ORGANISATION USERS LOG OUT

SMS BASED REMOTE SERVER MONITORING

Organization Registration

OrgId 11

Org Name

Password

Address

Mobile

eMail

Save View

12:07 AM
4/21/2016

4.User Registration

localhost:1137/REMOTE%20MONITORING%20SYSTEM/usercreate.aspx

HOME LOG OUT

SMS BASED REMOTE SERVER MONITORING

User Registration

OrgId

UserId 13

User Name

Password

Address

Mobile

eMail

localhost:1137 says:
Registered Successfully
OK

Waiting for localhost...

12:10 AM
4/21/2016

5.Message Report

userid	orgid	mobno	details	servername	ip	status
1	1	89036603660	keyboard not working	aaa	192.168.2.253	Completed
2	2	8903663660	problem in mouse	LITZ	127.0.0.1	Completed
4	4	9677499994	cbe	kavi-PC	127.0.0.1	Completed
6	7	9578524945	mouse not working	kavi-PC	192.168.1.26	Completed
6	7	9578524945	adadadsa	kavi-PC	192.168.1.26	pending
6	7	9578524945	adadadsa	kavi-PC	192.168.1.26	pending
6	7	9578524945	ghjku	kavi-PC	192.168.1.251	pending
6	7	9578524945	ghjku	kavi-PC	192.168.1.251	pending
6	7	7373781176	HELLO	kavi-PC	192.168.1.251	pending
6	7	7373781176	MOUSEERROR	kavi-PC	192.168.1.251	pending
6	7	7373781176	MOUSEERROR	kavi-PC	192.168.1.251	pending
6	7	7373781176	pcerror	kavi-PC	192.168.1.251	pending
6	7	9578524945	mouse	kavi-PC	192.168.1.251	pending
6	7	9578524945	keyboard	kavi-PC	192.168.1.251	pending
7	1	9578524945	monitor	kavi-PC	127.0.0.1	pending
8	6	9578524945	notanswer	kavi-PC	127.0.0.1	pending
8	6	9578524945	karur	kavi-PC	127.0.0.1	pending
9	4	9578524945	keyboard	kavi-PC	127.0.0.1	pending
8	6	9715210426	monitor	kavi-PC	100.82.52.39	pending
9	4	9578524945	hktyul	kavi-PC	127.0.0.1	pending
9	4	8760987448	keyboarderror	kavi-PC	192.168.1.251	pending

6.Organization Report

Org Id	Username	Password	Address	Mobile	email	Status		
1	AAA	12345	AAA	8903447451	aaa@gmail.com	Active	Edit	Delete
2	HCL	12345	PEELAMEDU	9488205200	hcl@gmail.com	Active	Edit	Delete
4	hclorgan	123	cbe	9677499994	abc@gmail.com	Active	Edit	Delete
5	dfa	123	palani	97314509	avcd@gmail.com	Active	Edit	Delete
6	hcl	100	cbe	9246719176	asdf@gmail.com	Active	Edit	Delete
7	adu	adu	ssss	9578524945	adu@gmail.com	Active	Edit	Delete
8	cci	456	karur	8945103453	kk@gmail.com	Active	Edit	Delete
9	CTS	999	madurai	9715210426	cts@gmail.com	Inactive	Edit	Delete
10	HP	hp123	chennai	9835177843	hp11@gmail.com	Inactive	Edit	Delete

7. User Report

Org Id	User Id	Username	Password	Address	Mobile	email	Status		
1	1	Swaathi	12345	100 feet road	9500674433	swaathi@gmail.com	Active	Edit	Delete
1	7	ranju	mani	cbe	8904316785	mani@gmail.com	Active	Edit	Delete
1	12	aravindh	aaa	sivakasi	7578610092	aru@gmail.com	Inactive	Edit	Delete
2	2	Suriya	12345	xsdctfvs	9998887770	suriya@gmail.com	active	Edit	Delete
3	3	Keerthi	12345	zddF	8903663660	keerthi@gmail.com	Active	Edit	Delete
4	4	abc	123	cbe	9677499994	abc@gmail.com	Active	Edit	Delete
4	5	nand	123	cbe	922156765	eruz@gmail.com	Active	Edit	Delete
4	9	ss	34	palani	9028426781	ss@gmail.com	Active	Edit	Delete
6	8	sathya	ss	palani	9023531769	ss@gmail.com	Active	Edit	Delete
7	6	arathi	arathi	xxx	9677499994	arathi@gmail.com	Active	Edit	Delete

8. User login

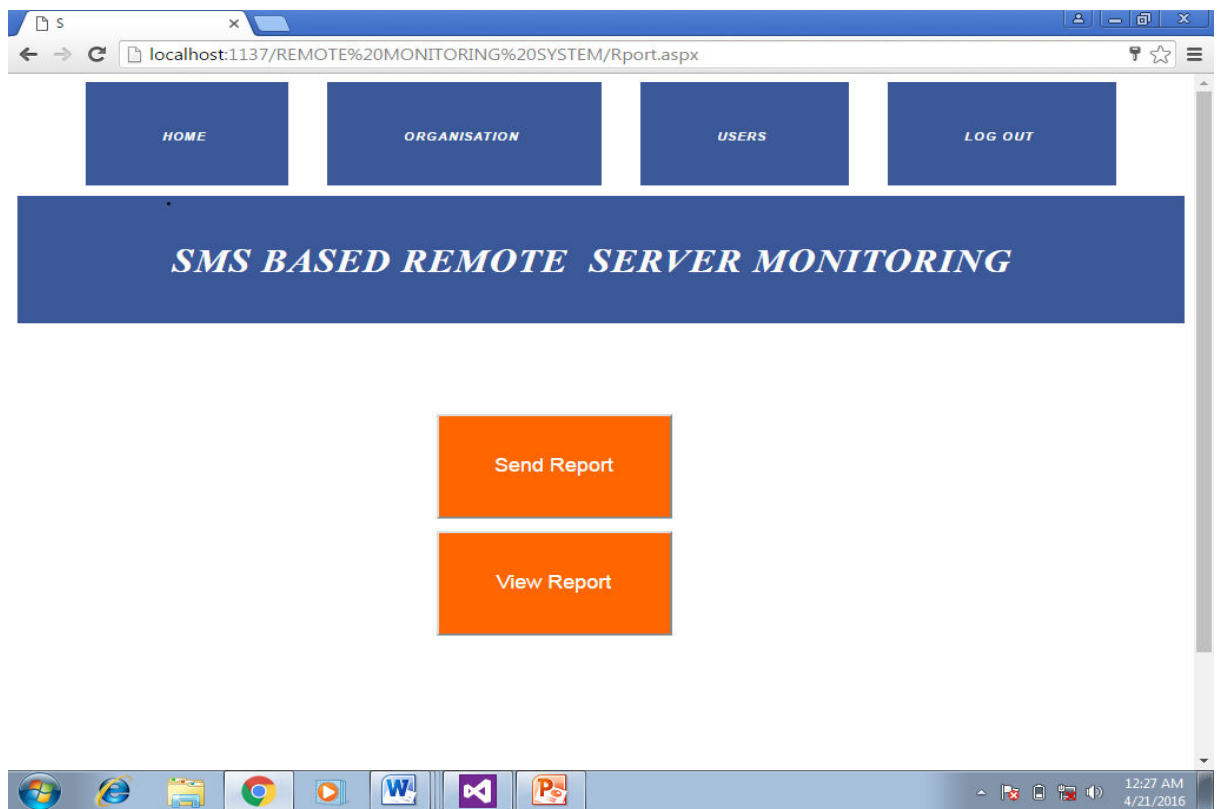
Login Form

Account Type:

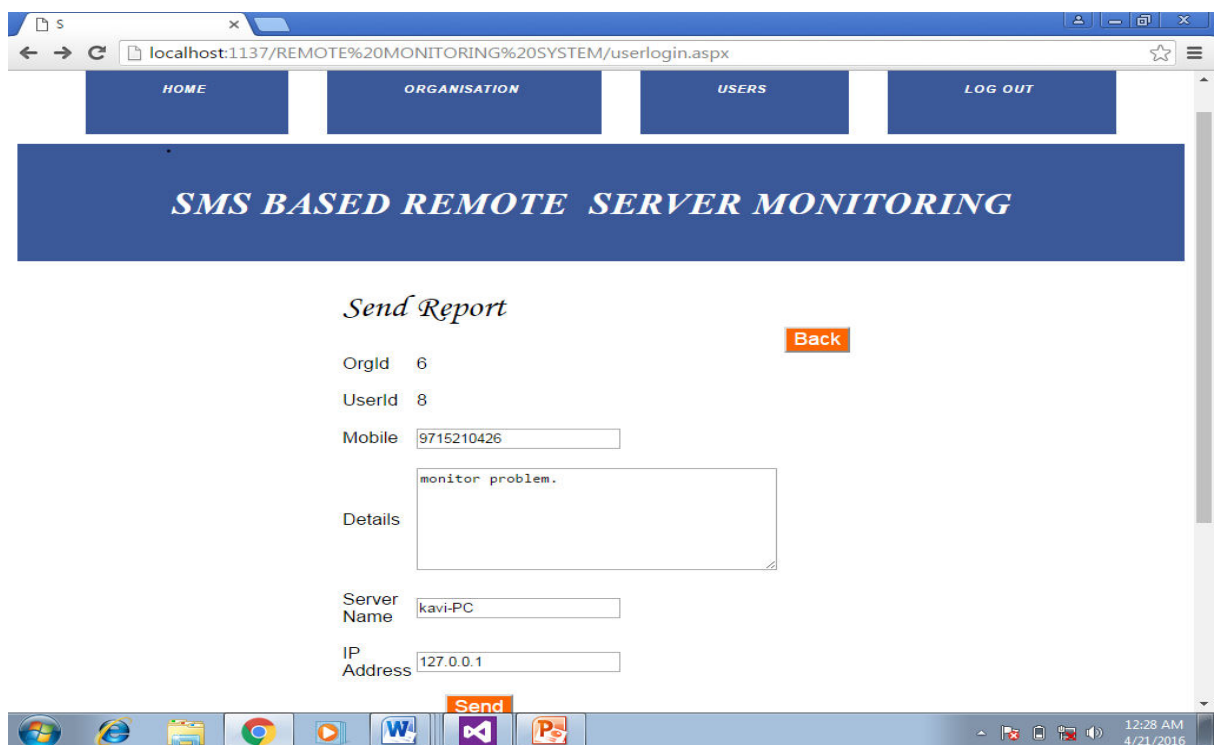
Userid:

Password:

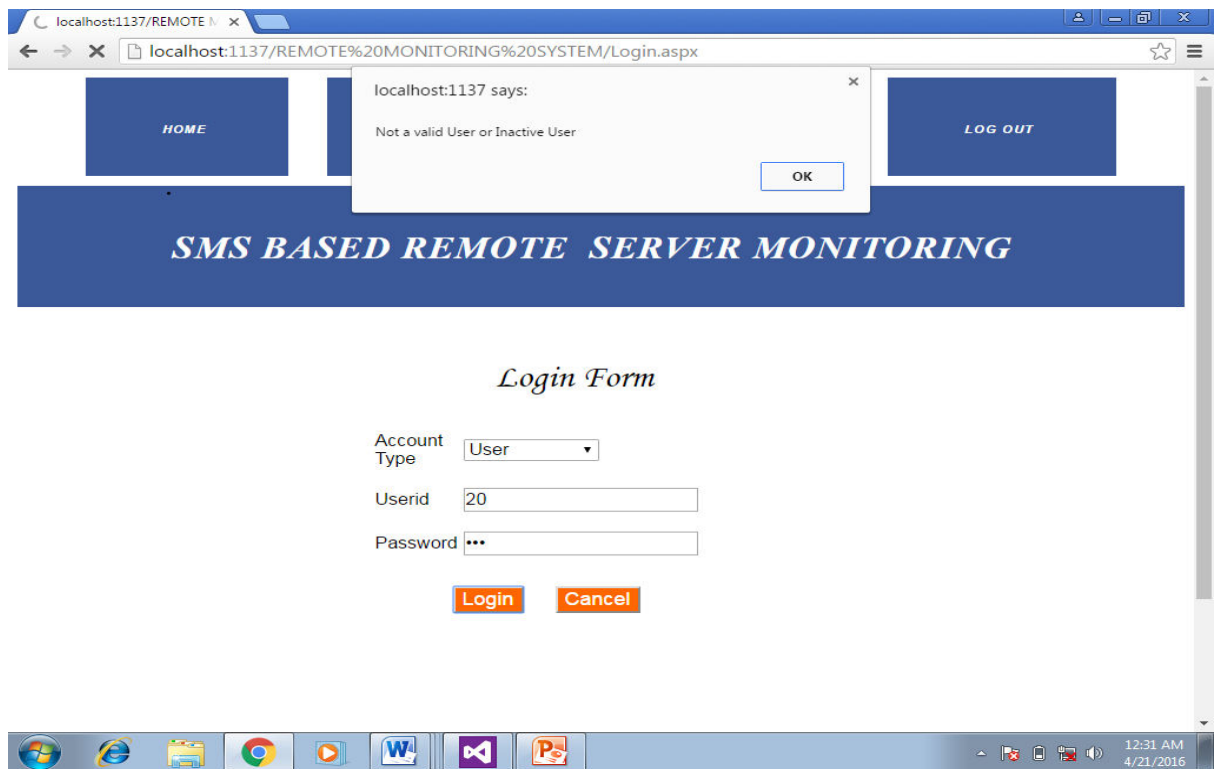
9. Send Report



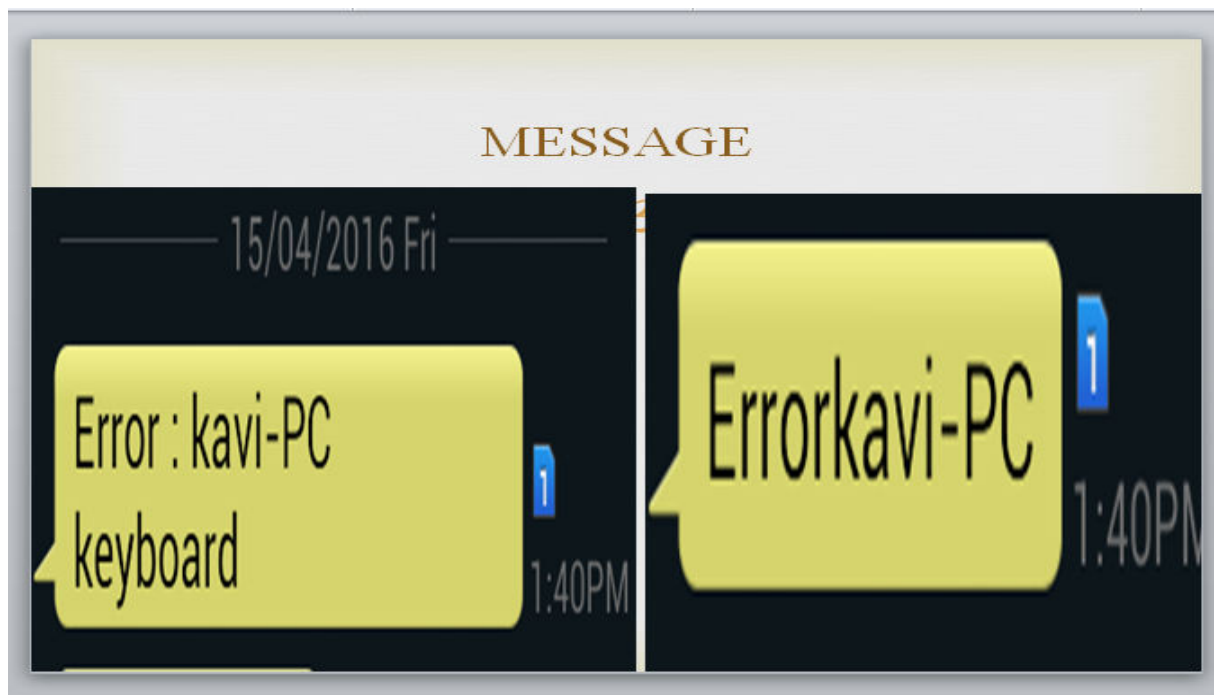
10. Sending message



11.Invalid User

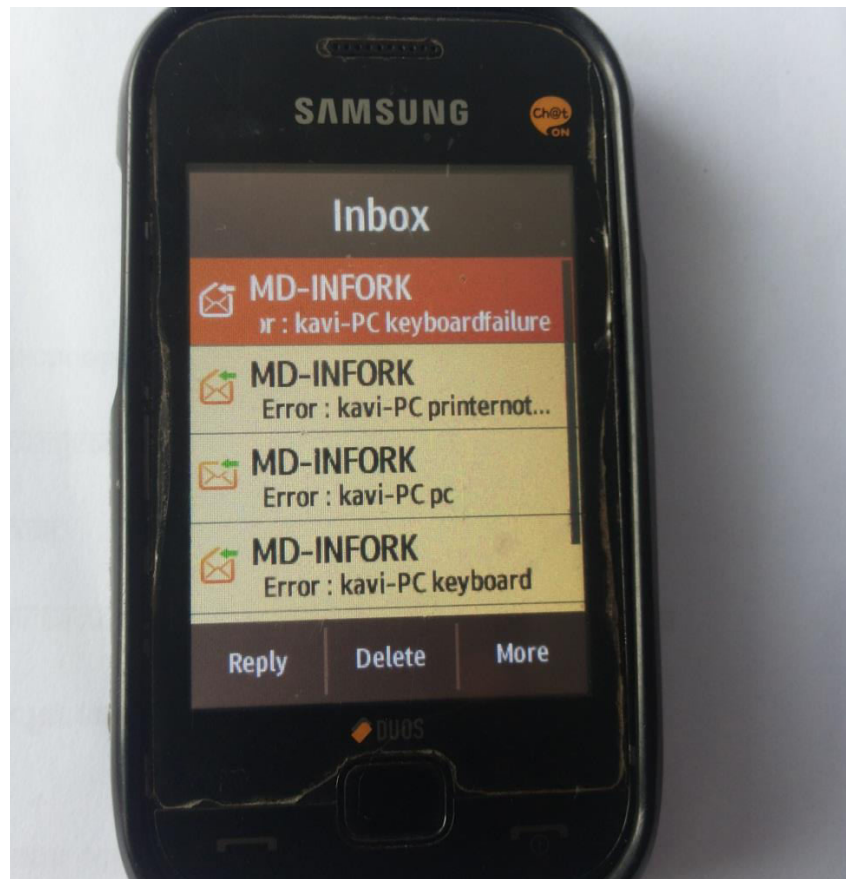


12.Messages

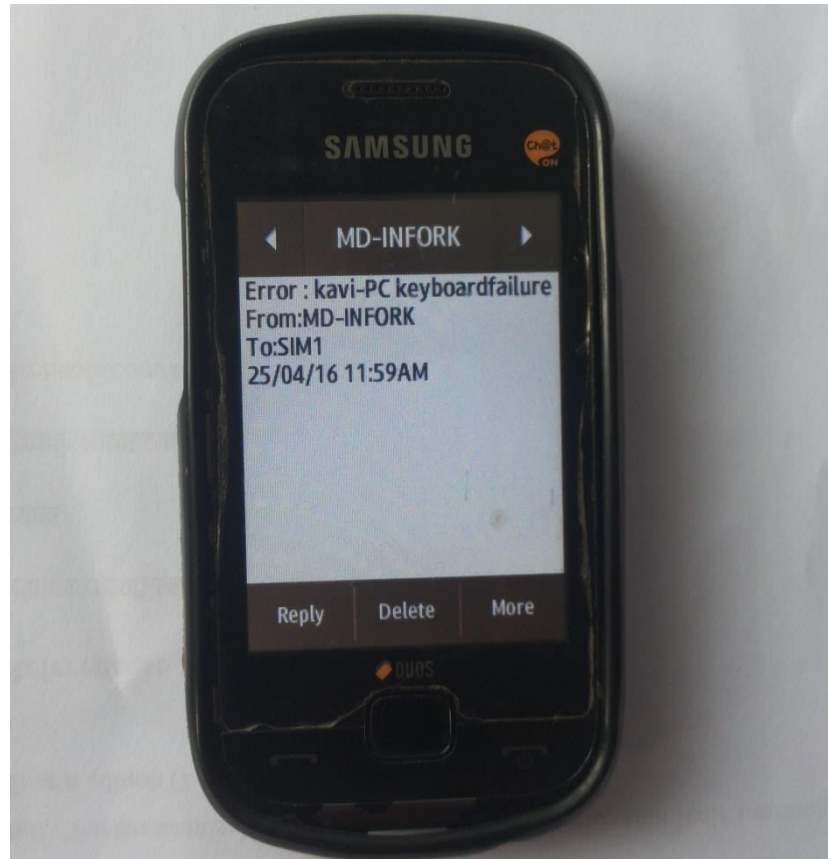


Acknowledgement Message

13.Inbox Message



14.Display the Error Message



15.Display the Error Message

