

HOW? WHY? WHERE?

WOOL

E. L. GAYLARD

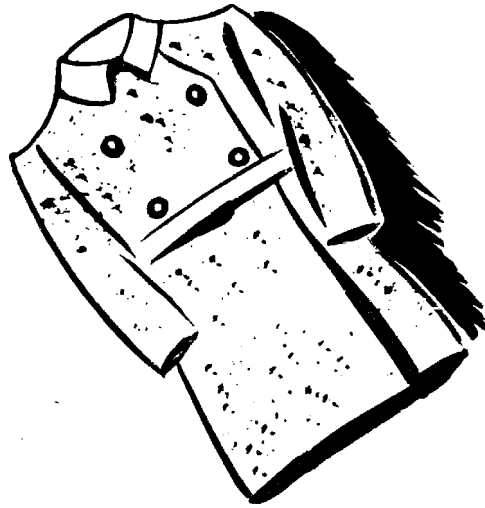
E. J. Arnold & Son Ltd. Leeds



WOOL

Did you know your winter coat was made from the fleece of a sheep?

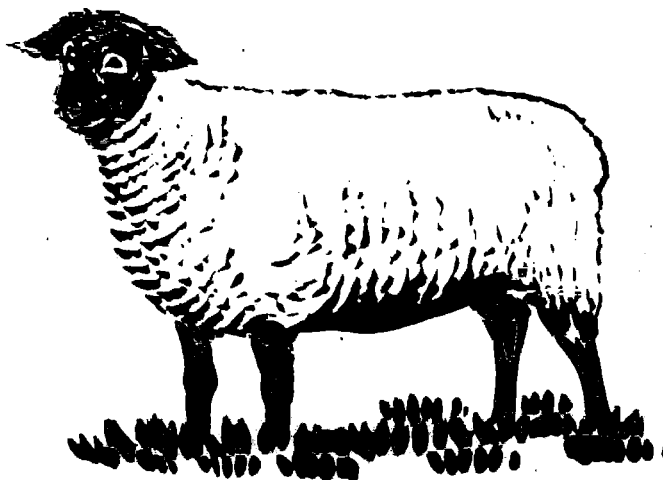
The sheep's woollen coat is called its fleece. The wool is soft and keeps the sheep warm in winter.



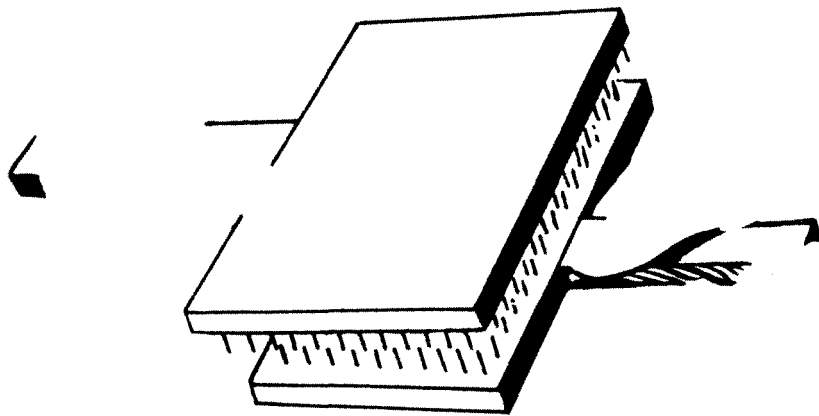


In summer the sheep does not need such a thick coat, so the farmer cuts it off.

This is called shearing the sheep. The sheep is glad to have its heavy coat shorn.



6

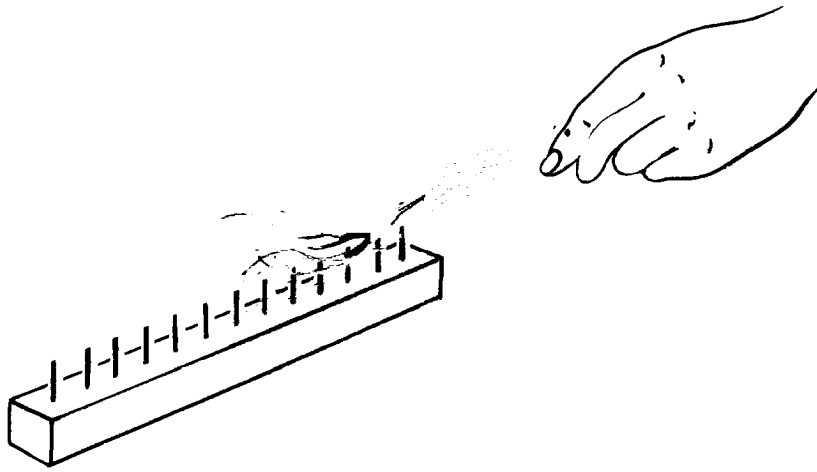


The fleece is oily and dirty when it is shorn. It is sent to the mill where it is washed and dried.

It is then carded.

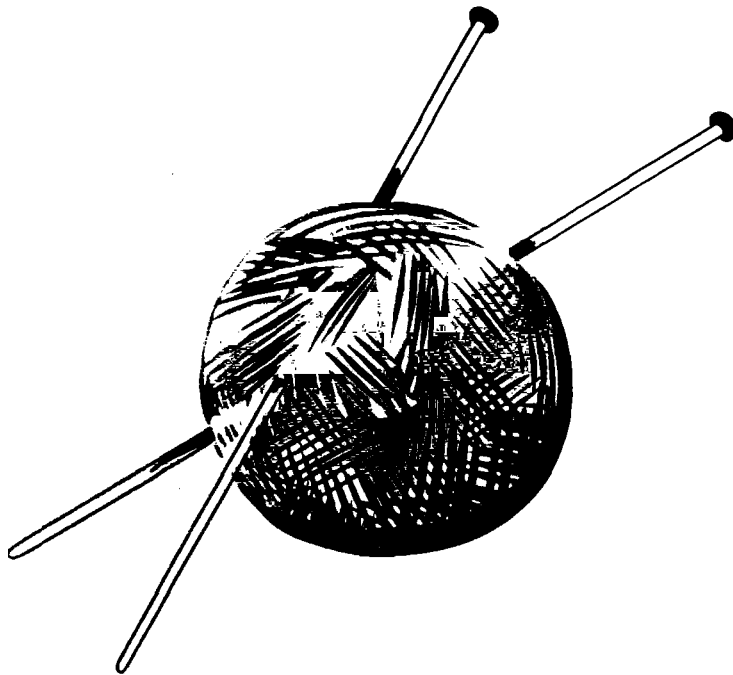
The picture shows how this is done. Carding gets out the tangles.





Now the wool has to be combed.

This makes the hairs all go one way and makes a thick strand.

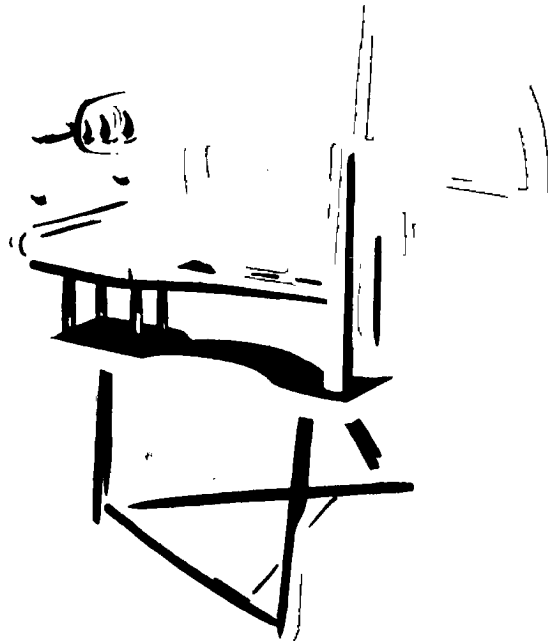


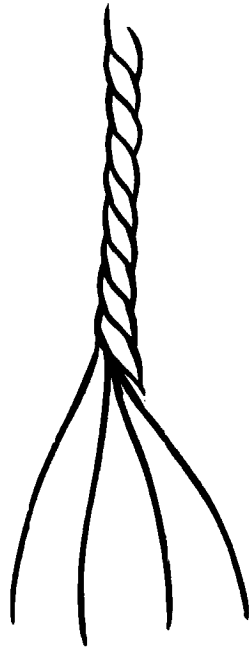
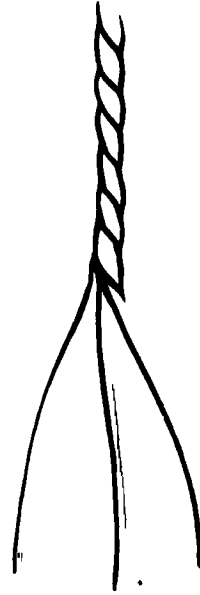


The short lengths of wool have to be pulled and twisted into long threads.

This is called spinning.

Spinning makes the wool into long, thin threads.





Two, three or four of these threads are twisted together.

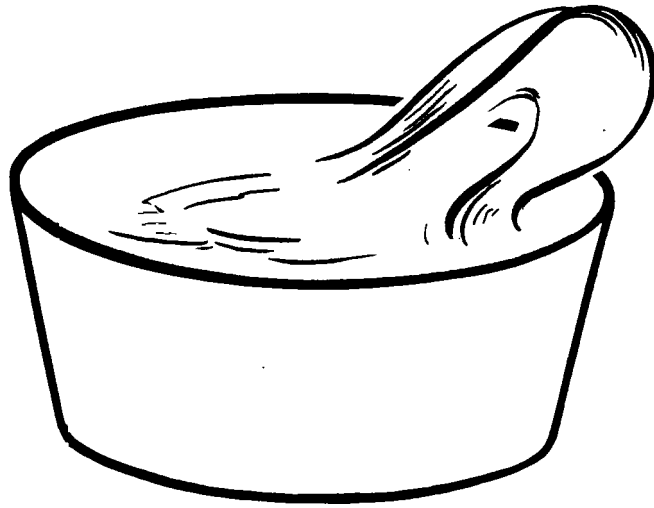
This makes the wool we use for knitting.

Two threads twisted together make 2 ply wool.

When three threads are used it is called 3 ply wool.

Thick wool is made of four threads, and is called 4 ply wool.



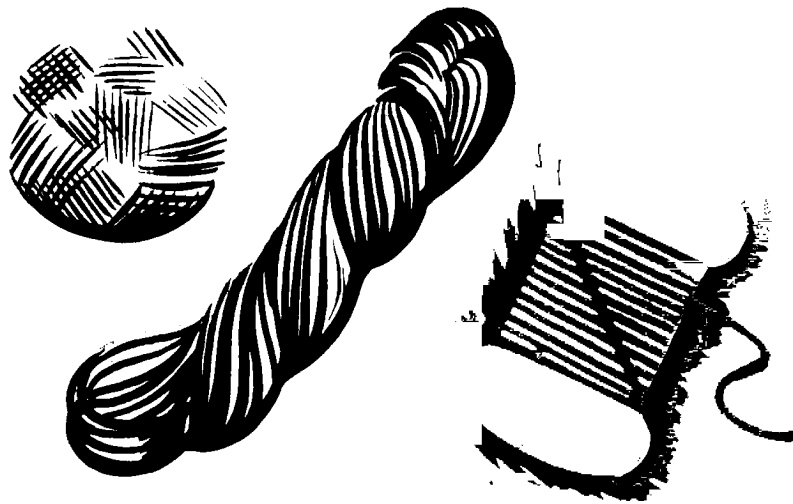


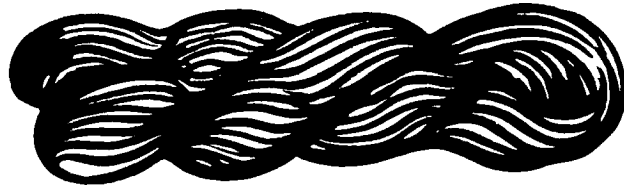
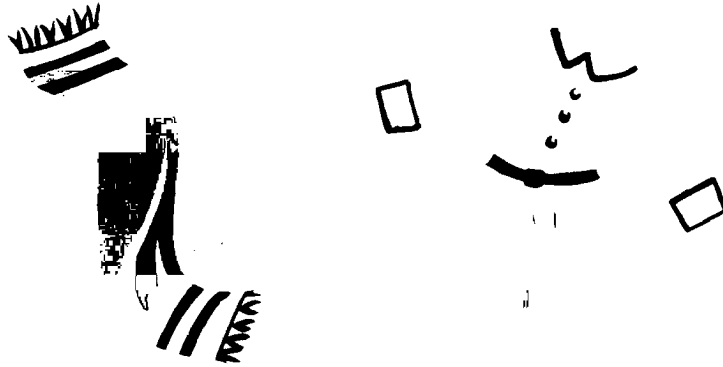
Do you like the colour of the wool in the picture?

It has been dyed to make it this colour.

The wool is boiled in the dye. Then it is dried and made into balls and hanks.

To make wool white it has to be bleached.



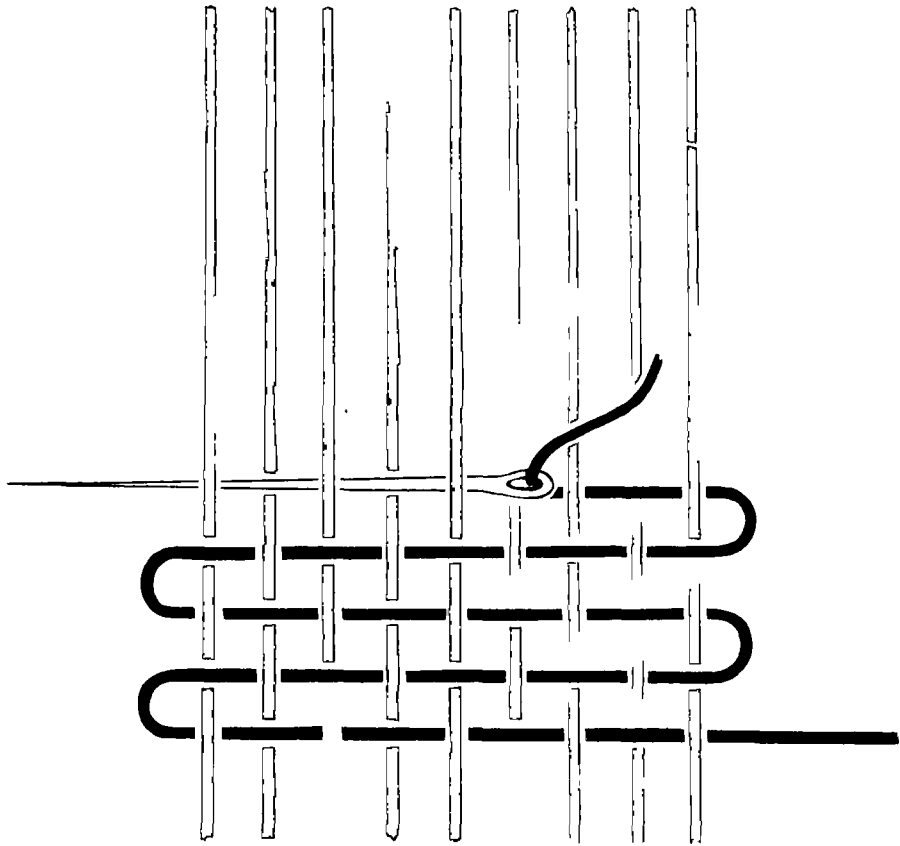


This is how the wool looks when you see it in the shops.

You can buy some wool and learn to knit.

Here are some things you can knit for your doll.



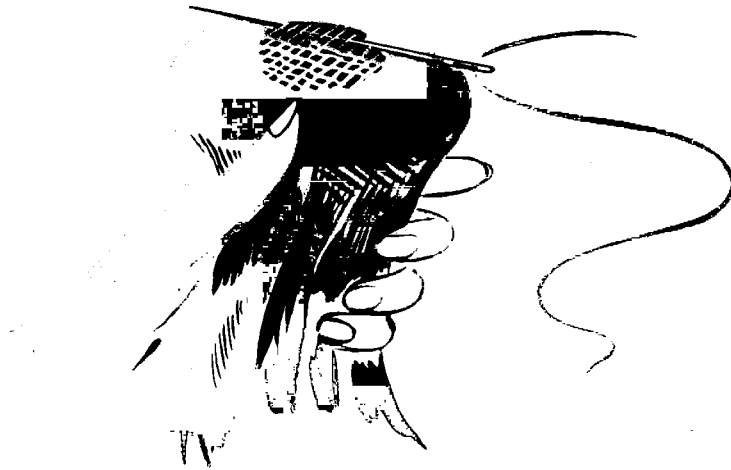


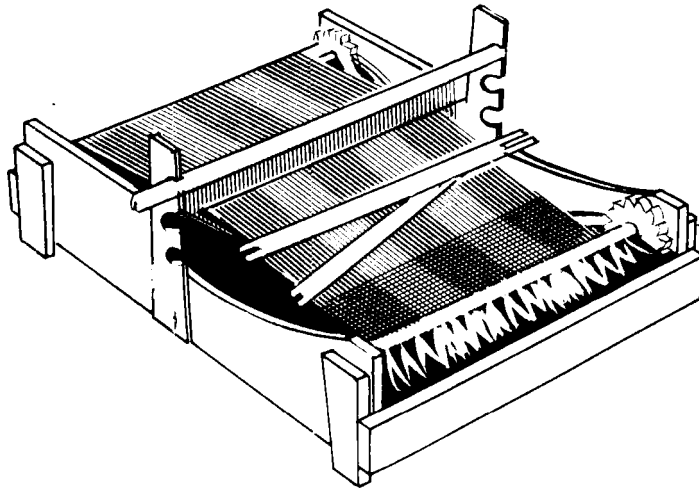
To make cloth the wool must be woven.

This is like darning.

In the picture on page 18 you see the needle running across under and over the long threads.

Thread a needle and try to darn a hole.

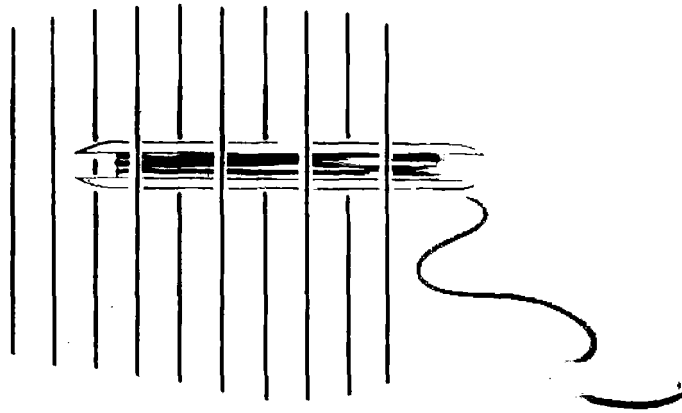




The picture on page 20 shows another way of weaving.

The wool is put into a loom. The threads going up and down are called the warp. The ones going across are called the weft.

The weft is wound round a shuttle and woven under and over the warp.



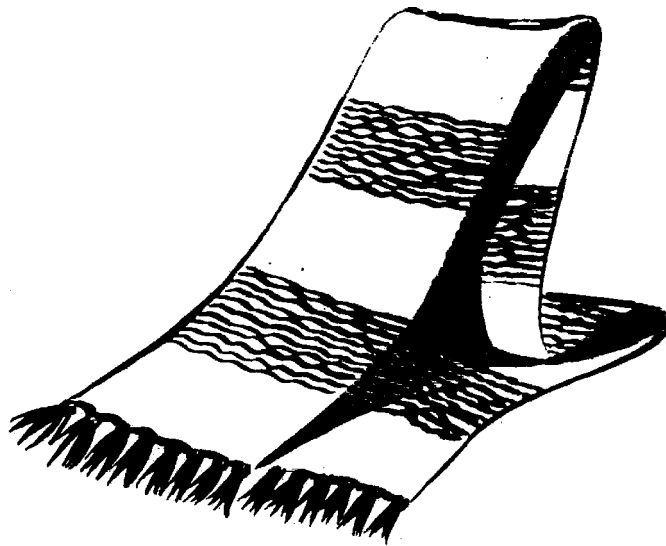


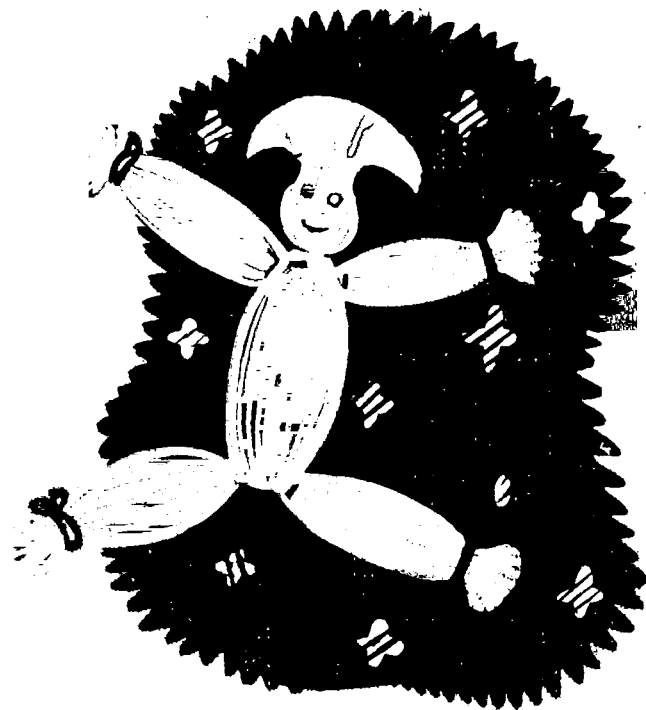
On page 22 is a dress made from woollen cloth.

Would you like to wear it?

It is made from wool that has been carded, spun, dyed and woven.

Here is a scarf which has been made out of wool.





E. J. Arnold & Son Ltd. Leeds