



A Heterogeneous Precipitate Based Magnesium Ion Selective Electrode-Its Preparation and Analytical Application

M.SUDHA and J.THAMARAI SELVI*

Department of Chemistry, Avinashilingam Institute for Home Science and Higher Education for Women, Coimbatore- 641043, India.

*Corresponding author E-mail: thamraj2005@yahoo.co.in

<http://dx.doi.org/10.13005/ojc/300343>

(Received: April 06, 2014; Accepted: May 15, 2014)

ABSTRACT

A new simple ion-selective electrode poly (vinyl chloride) membrane sensor for Mg (II) ions based on magnesium Salicylate as a new ionophore has been prepared and studied. The electrode exhibits a good potentiometric response for Mg (II) ion over a wide concentration range 1.0×10^{-7} to 1.0×10^{-1} N with a slope value of electrode-I was 23 mv/decade and 28 mv/decade for electrode-II. The electrode can be used over 2 months with good reproducibility. The sensor was used as an indicator electrode in a potentiometric titration of Mg (II) ions against EDTA. The sensor was used to determine the Mg (II) ions in baby food products and spinach.

Key words: Ion Selective Electrode, Magnesium, poly (vinyl chloride), Potentiometry.

INTRODUCTION

Magnesium is essential to almost all life on earth. Magnesium is a heart of the chlorophyll molecule, which plants used to convert the carbon dioxide to glucose. Magnesium is found in enzyme in plants and animals, its speed up the rate which certain changes takes place in the plants and animals. Magnesium is an essential element for humans. Humans take 300 to 400 mg of magnesium for their daily diet. Magnesium mainly used as fireworks and medicinal purpose. Deficiency of magnesium develops the yellowish blotches in

plant and a person may cause some side effects. Magnesium powder is harmful to the environment. Ion Selective Electrode (ISE) is a membrane electrode that responds selectively to ions in the presence of others. ISE measures the potential of a specific ion in solution. ISE possess a higher degree of selectivity. The potential developed at the membrane is the result of either ion exchange or ion transport process takes place between the membrane and solution. ISE in environment analysis offer several advantages over other methods of analysis. ISE are inexpensive and simple to use and have an extremely wide range of applications.

Potentiometric measurement is an electro analytical method, which is based on the measurement of potential of an electrode system. It establishes the analyte ion in the presences of various interfering ions from the sample. Potentiometric method provides information about concentration of reactant during the titration.

In this study, a new simple heterogeneous precipitate based magnesium ion selective electrode has been prepared and the electrode potential performance of parameters like slope, response time, measurement range, effect of pH, effect of medium, and selectivity coefficient with respect to different interfering ions have been measured. An attempt was also made to determined magnesium ion in real sample like spinach and baby food products.

Experimental process

Preparation of Magnesium Salicylate ionophore

Magnesium nitrate hexahydrate (7.01g) and salicylic acid (9.501g) was dissolved in 100ml of methanol. This reaction mixture was stirred for 30 min with use of magnetic stirrer; the clear solution was obtained. 25ml of ammonia was added to the solution to get white precipitate, which is filtered and dried for 24 hours. Weight of crude precipitate is 5.95g and recrystallised from distilled water.

Preparation Coated Ion selective electrode-I

Copper wire was polished with fine emery paper and the wire was dipped in to the solution (0.3g of prepared ionophore (Magnesium Salicylate), polyvinyl chloride, dibutyl phthalate, sodium tetra phenyl borate, and tetra hydro furan) for 24 hours and dried for overnight. The electrode-I was kept in equilibrium for 2 weeks in 1N solution of $Mg(NO_3)_2$.

coated copper wire (working electrode)

The electrode system for the measurement can be represented as

Coated copper wire	Sample	External reference
(working electrode)	solution	electrode Ag/AgCl

Preparation of Membrane

0.4g of ionophore with 0.1g of polyvinyl chloride, 0.1g of sodium tetra phenyl borate, predetermined ratio of dibutyl phthalate and tetra hydro furan are taken and the mixture are allow to heat in a steam bath still evaporate the liquids. The precipitate was mixed with araldite (epoxy adhesive) (Huntsman advanced materials, India, Pvt LTD) to make a homogeneous paste which was then applied on the clean watch glass. The paste was uniformly spread over the watch glass. The membrane was air dried for 48 hours (Electrode –II).

Preparation of Membrane ion selective electrode-II

A circular piece of this membrane was cut and fixed with resin at one end of the hollow glass tube of diameter 2 cm and length 8 cm. The tube was filled with saturated solution of $Mg(NO_3)_2$ and reference copper metal wire of diameter 0.5 mm and length 20 cm was inserted through other end of the tube in such a way that it remained dipped in the saturated solution of $Mg(NO_3)_2$. This complete assembly will work as an ion selective electrode of Mg (II) ion. This ion selective electrode was kept in 1N solution of $Mg(NO_3)_2$ for one week for equilibrium.

The electrode system for the measurement can be represented as

Internal	Internal	Electro	Sample	External
Reference Electrode (Cu wire)	Reference Solution ($Mg(NO_3)_2$)	Active Membrane	Solution	Reference Electrode (Ag/AgCl)

The prepared electrode was connected to one terminal of a digital potentiometer (Equiptronics EQ-602). The other terminal was connected to the reference electrode (Ag/AgCl). The ISE was

immersed in the sample solution of 1N $Mg(NO_3)_2$ and the reference electrode immersed in doubly distilled water. The solutions are connected by using Potassium nitrate – agar salt bridge.

Preparation of spinach solution

Spinach was dried for 12 hours at 80 °C in oven and ground well. To 1g of powdered spinach 5 ml of concentrated HNO₃ and 2ml of HClO₄ were added. The solution digests for 40 minutes to get final volume of 4ml and add 10ml water. Filtered the solution in a 100ml standard flask and diluted with deionized water to the volume (Nikolas *et al.*, 1997).

Preparation of baby food products solution

10g of baby food and 1ml of concentrated hydrochloric acid is added and stirred well. This solution transferred to a standard flask and makeup to 100ml with deionized water. (Seema *et al.*, 1999).

RESULTS AND DISCUSSION**Characterization**

IR spectrum of ionophore (Magnesium salicylate) In the IR spectrum the peak at 1759cm⁻¹ corresponding to the carbonyl group frequency and the peak at 1141cm⁻¹ attributes to the C-O-C group. The peak at 979.84cm⁻¹ corresponding to the C=C.

In UV spectrum the peak at 269.32nm corresponding to the aromatic region.

A series of aqueous solution of magnesium nitrate of different concentration range from 1N to 1×10⁻⁶ were prepared. The electrode potential

Table 1: Electrode response for Electrode-I and Electrode-II

S.No	Concentration of Mg(NO ₃) ₂ solution (N)	Electrode-IEMF(Volts)	Electrode-IIEMF(Volts)
1	1	0.120	0.059
2	1×10 ⁻¹	0.133	0.049
3	1×10 ⁻²	0.147	0.040
4	1×10 ⁻³	0.153	0.033
5	1×10 ⁻⁴	0.163	0.027
6	1×10 ⁻⁵	0.165	0.025
7	1×10 ⁻⁶	0.165	0.025

Table 2: Effect of pH for Electrode-I

S.No	Concentration of (MgNO ₃) ₂	Electrode-IEMF(Volts)	pH 4
1	1	0.120	0.120
2	1×10 ⁻¹	0.133	0.137
3	1×10 ⁻²	0.147	0.145
4	1×10 ⁻³	0.153	0.148
5	1×10 ⁻⁴	0.163	0.161
6	1×10 ⁻⁵	0.165	0.165

Table 3: Effect of pH for Electrode-II

S.No	Concentration of (MgNO ₃) ₂	Electrode-IIEMF(Volts)	pH 4	pH 9
1	1	0.059	0.058	0.061
2	1×10 ⁻¹	0.049	0.047	0.052
3	1×10 ⁻²	0.040	0.044	0.045
4	1×10 ⁻³	0.033	0.032	0.030
5	1×10 ⁻⁴	0.027	0.029	0.022
6	1×10 ⁻⁵	0.025	0.026	0.021

Table 4: Effect of Medium for Mg²⁺ Ions

Concentration of Mg(NO ₃) ₂ solution (N)	Solvent	Percentage of the solvent	EMF (volts)
1N Mg(NO ₃) ₂	Ethanol	25%	0.116
		50%	0.111
	Hexane	25%	0.114
		50%	0.116
		75%	0.118
	THF	50%	0.114
	DMA	50%	0.111
	DMF	25%	0.113
		50%	0.115

Table 5: Effect of Medium for Mg²⁺ Ions

Concentration of Mg(NO ₃) ₂ solution (N)	Solvent	Percentage of the solvent	EMF (volts)
1N Mg(NO ₃) ₂	Ethanol	25%	0.116
		50%	0.111
	Hexane	25%	0.114
		50%	0.116
		75%	0.118
	THF	50%	0.114
	DMA	50%	0.111
	DMF	25%	0.113
		50%	0.115

Table 6: Selectivity Coefficient Values for Electrode-I

S.No	Cations	Selectivity Coefficient
1	NH ₄ ⁺	8.6×10 ⁻⁵
2	Al ³⁺	4.3×10 ⁻⁵
3	Na ⁺	1.7×10 ⁻⁴

Table 7: Selectivity Coefficient Values for Electrode-II

S.No	Cations	Selectivity Coefficient
1	NH ₄ ⁺	-7.1×10 ⁻⁵
2	Al ³⁺	-1.7×10 ⁻⁴
3	Na ⁺	-3.5×10 ⁻⁵
4	K ⁺	-3.5×10 ⁻⁵
5	Ni ²⁺	3.5×10 ⁻⁵

of series of standard solution of Mg²⁺ ion was measured. For both the electrode (I&II) the liner response was observed from 1N to 1×10⁻⁵N. The values are tabulated in table1. The calibration curve was plotted using best fit method.

The slope value was calculated from the calibration curve and it was found to be 23mv/decade for electrode-I and 28mv/decade for Electrode-II.

Effect of pH for Electrode-I and Electrode-II

The effect of pH on the response of electrode (I&II) was studied in this work. It was found that electrode-I worked well in the acidic pH range of 4.0 in the concentration of 1×10⁻⁵N Mg (II) ions. The electrode-II worked well in acidic pH range of 4.0 in the concentration range of 1×10⁻⁵N Mg(II) ions and pH range of 9.18 it worked well in the concentration of 1×10⁻⁵N Mg (II) ions. The values are tabulated in table 2 &3.

Table 8: Magnesium determination in some real samples for Electrode I

S.No	Theoretical value (mg)	Sample	Result obtainedBy ISE (mg)	Recovery
1	16.5	Horlicks (Blue)	16.4	99%
2	65	Boost (Pink)	65.36	96%
3	79	Spinach (Brown)	79.54	99%

Table 9: Magnesium determination in some real samples for Electrode-II

S.No	Theoretical Value (mg)	Sample	Result obtainedBy ISE (mg)	Recovery
1	16.5	Horlicks (Blue)	17.6	94%
2	65	Boost (Pink)	60.20	95.5%
3	79	Spinach (Brown)	73.21	93%

Effect of Medium

The effect of medium on the response of electrode (I&II) also be done. For a electrode-I was found that the potential remains unchanged with a standard solution of 1N $Mg(NO_3)_2$ in a series of hexane(25%,50%,75%), ethanol(25%,50%), DMF (25%,50%), THF(50%) and DMA(50%). For electrode-II was found that the potential remains unchanged with a standard solution of 1N $Mg(NO_3)_2$ in a series of hexane(25%,50%,75%), DMA (25%,50%,75%), ethanol(25%,50%,75%), THF (25%,75%) and DMF(25%,50%). The values are tabulated in table 4&5.

Selectivity of Electrode-I and Electrode-II

Selectivity is one of the most important characteristics of a electrode system. The potential

response of the magnesium ion selective electrode (I&II) to different metal ion have been investigated by determining the selectivity coefficient of the electrodes using fixed interference method (FIM) based on the semi empirical Nicolskii-Eisenman equation and the concentration of interfering ion was set to 1N. It was found that the potential remains unaffected in the presence of a series of various cation.

Interference by cations for Electrode-I and Electrode-II

To study the cationic interference due to other ions, the electrode potential were recorded in a mixed solution method having a fixed 1N concentration of primary ion (Mg^{2+}) and interference ions. For the electrode-I from the interference study the potential remains unaffected in the presence of

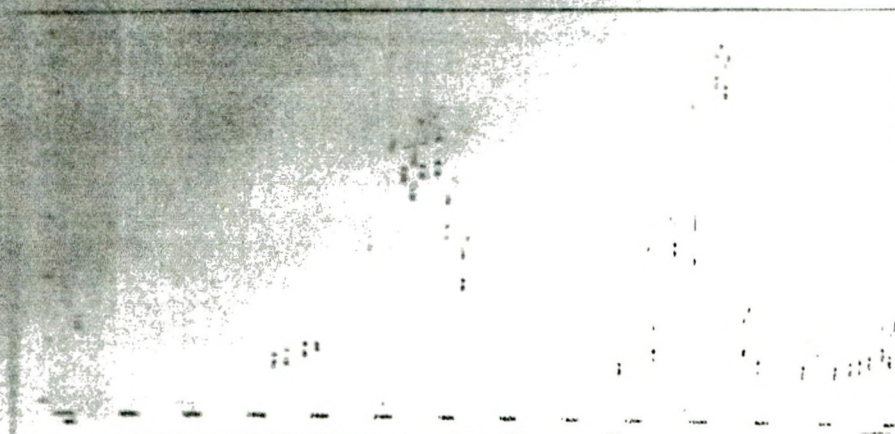


Fig. 1: IR Spectrum of Magnesium Salicylate

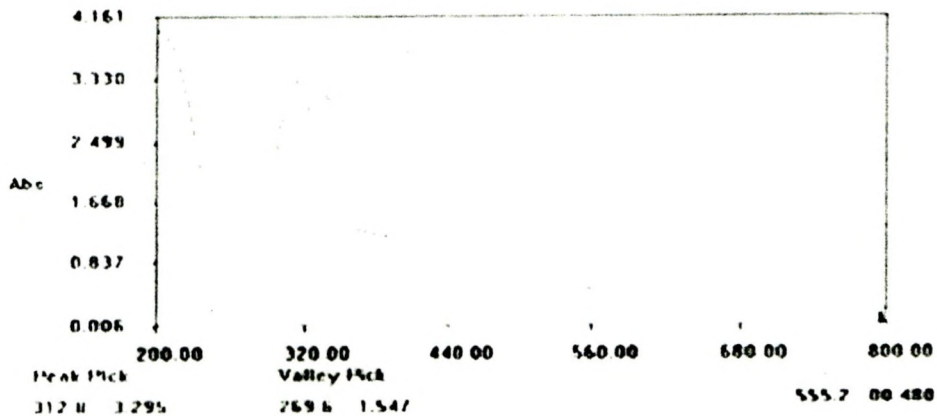


Fig. 2: UV spectrum of Magnesium Salicylate

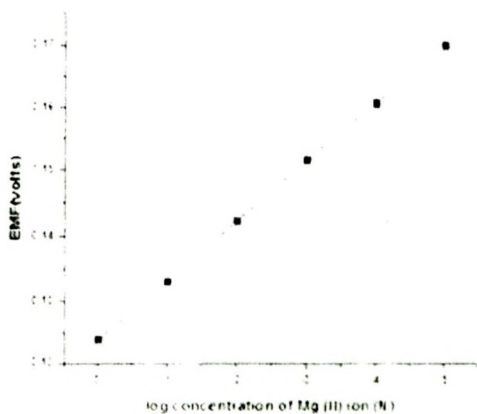


Fig. 3: Plot of log concentration of Mg(II) ion (M) Vs EMF (volts)

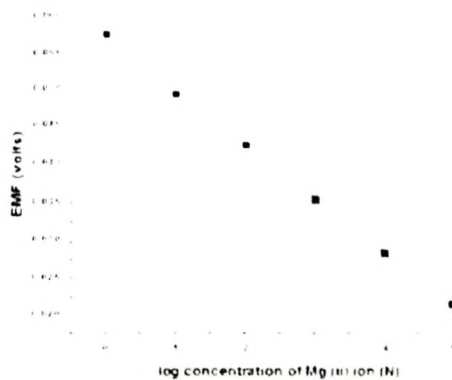


Fig. 4: Plot of log concentration of Mg(II) ion (M) Vs EMF (volts)

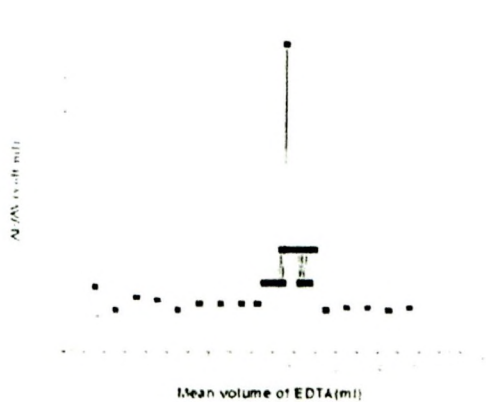


Fig. 5: Plot of mean volume of EDTA (ml) Vs $\Delta E/\Delta V$ (volt/ml)

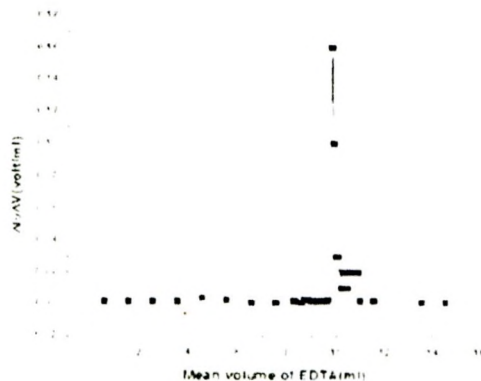


Fig. 6: Plot of mean volume of EDTA (ml) Vs $\Delta E/\Delta V$ (volt/ml)

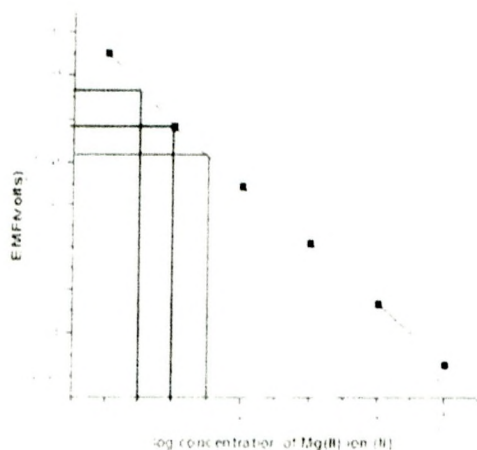


Fig. 7: Plot of log concentration of Mg(II) ion (N) Vs EMF (volts)

series of various cations like NH_4^+ , Al^{3+} , and Na^+ . For an electrode-II the potential remains unaffected in the presence of series of various cations like NH_4^+ , Al^{3+} , Ni^{2+} , Na^+ , and K^+ . The values are tabulated in table 6&7.

Analytical Application

The practical application of proposed two electrodes was tested by using as an indicator electrode for potentiometric titrations of magnesium (II) ion with EDTA solution. To assess the applicability of the sensors to real sample an attempt was made to determine magnesium ion in baby food products (Horlicks, Boost) and spinach. The recovery of magnesium ion in sample analysis was found to be 99%, 96%, 99% for electrode-I and electrode-II was found to be 94%, 95.5%, 93% of

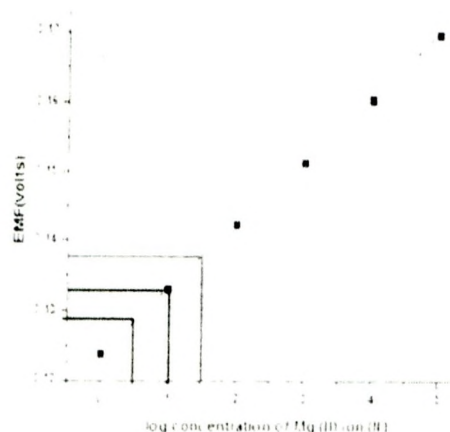


Fig. 8: Plot of log concentration of Mg(II) ion (N) Vs EMF (volts)

magnesium ion. The values are tabulated in table 8&9.

CONCLUSION

A new simple method to determine the magnesium ion developed electrochemically. The proposed two electrodes were found to work well under the laboratory condition. This method is done by Potentiometry; it is accurate, simple and cost effective. The sensor exhibits a Nernstian response in the concentration range 1×10^{-5} for both the electrodes (I&II). The effect of medium, effect of pH, selectivity and response time also measured. The magnesium (II) ion selective membrane sensor effectively applied for the determination of magnesium ion in baby food products and spinach.

REFERENCES

1. Baniwal, S.; Chandra, S.; Panwar, A.; Singh, A.K., *Talanta*, **1999**, *50*, 499–508.
2. Chaniotakis, N. A.; Tsagatakis, J. K.; Moschou, E. A.; West, S. J.; Wen, X., *Analytica Chimica Acta*, **1999**, *356*, 105–111.
3. Gupta, V. K.; Chandra, S.; Mangla, R., *Sensor and Actuators*, **2002**, *86*, 235–241.
4. <http://bestpractice.bmj.com/best-practice/monograph/1137.html>
5. <http://www.iherblibrary.com/magnesium-book/magnesium-overview>
6. WWW.Google.Com